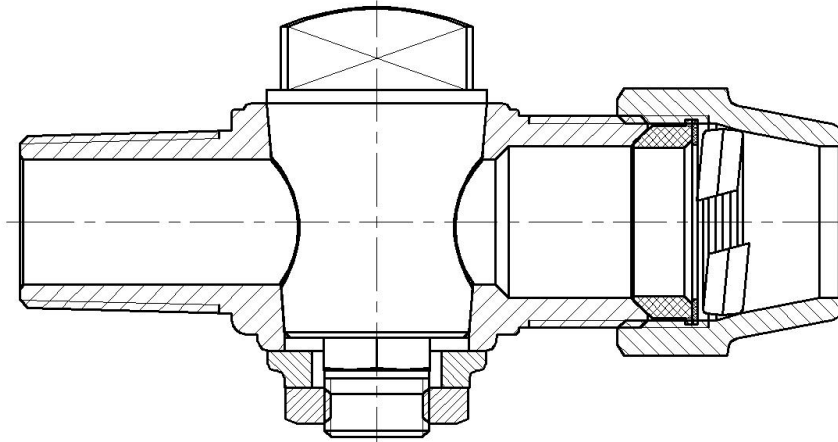




Submittal Information

United Plug Style Corporation Stop

AWWA/CC Tapered Thread x Grip Joint Compression (CTS)



Valve Size	Inlet Size	Outlet Size	Weight Lbs.	Length	Part Number
3/4"	3/4"	3/4"	1.65	3-3/4"	CV3PTTG - NL
1"	1"	1"	2.74	4-9/16"	CV4PTTG - NL

➤ Pack Joint Nuts are available upon request

Features

- All brass parts that come into contact with potable water conforms to AWWA Standard C800 (UNS C89833)
- Components that do not contact potable water conform to AWWA Standard C800 (ASTM B-62 and ASTM B-584, UNS NO C83600 – 85-5-5-5)
- Classified to ANSI/NSF 61 and Annex G
- The product has “NL” letters cast into body of fitting for proper identification
- Valve is non-directional and is watertight with flow in either direction
- Ends are integral or secured with adhesive to prevent unintentional disassembly

Utilities Supply, Inc.

575 Loganville Hwy

Winder, GA 30680

Website: utilityessupply.com

Email: sales@utilityessupply.com