



ej

ejco.com
Made in the USA

Water Distribution Solutions



Table of Contents

| | |
|--|-----------|
| WaterMaster® Fire Hydrants | 4 |
| FlowMaster® Resilient Wedge Gate Valves | 18 |
| Valve Boxes | 26 |

Water Distribution Solutions

| Section | Description | Page |
|--|--|-------|
| Overview | | 3 |
| WaterMaster® Fire Hydrants | Introduction | 5 |
| | CD and BR Design Highlights | 6 |
| | Configurations | 7 |
| | Features and Benefits | 8-9 |
| | Additional Options, Kits, and Tools | 10 |
| | Design Enhancements in 350 psi Fire Hydrants | 11 |
| | WaterMaster® 5CD250 Fire Hydrant Parts | 12 |
| | WaterMaster® 5CD350 Fire Hydrant Parts | 13 |
| | WaterMaster® 4.5CD350 Fire Hydrant Parts | 14 |
| | WaterMaster® 5BR250 Fire Hydrant Parts | 15 |
| | WaterMaster® 5BR350 Fire Hydrant Parts | 16 |
| | Additional Resources | 17 |
| | Typical Hydrant Installation | 17 |
| FlowMaster® Resilient Wedge Gate Valves | Introduction | 19 |
| | 2"-16" Features and Benefits | 20 |
| | 2"-16" FlowMaster® Valve Parts | 21 |
| | 20" and 24" Features and Benefits | 22 |
| | Valve Dimensions and Available End Connections | 23 |
| | 2" - 16" FlowMaster® Resilient Wedge Gate Valves Sample Specification | 24 |
| | 20" - 24" FlowMaster® Resilient Wedge Gate Valves Sample Specification | 25 |
| Valve Boxes | Introduction | 27 |
| | Screw Type—2 Piece, 8550 Series | 28-29 |
| | Screw Type—3 Piece, 8560 Series | 30-31 |
| | Slip Type—2 Piece, 8555 Series | 32-33 |
| | Valve Box Drop Lids, 6800 Series | 34-35 |
| | Valve Box Risers, 8500 Series | 35 |
| | SELFLEVEL® Valve Box Top | 36 |
| | Gas Valve Boxes, 8570 Series | 37 |
| | Additional Valve Boxes | 38 |

New Inlet Options

6" vertical flanged end and
8" mechanical joint

350 psi Rated fire hydrants

Now Available

14" resilient wedge
gate valve



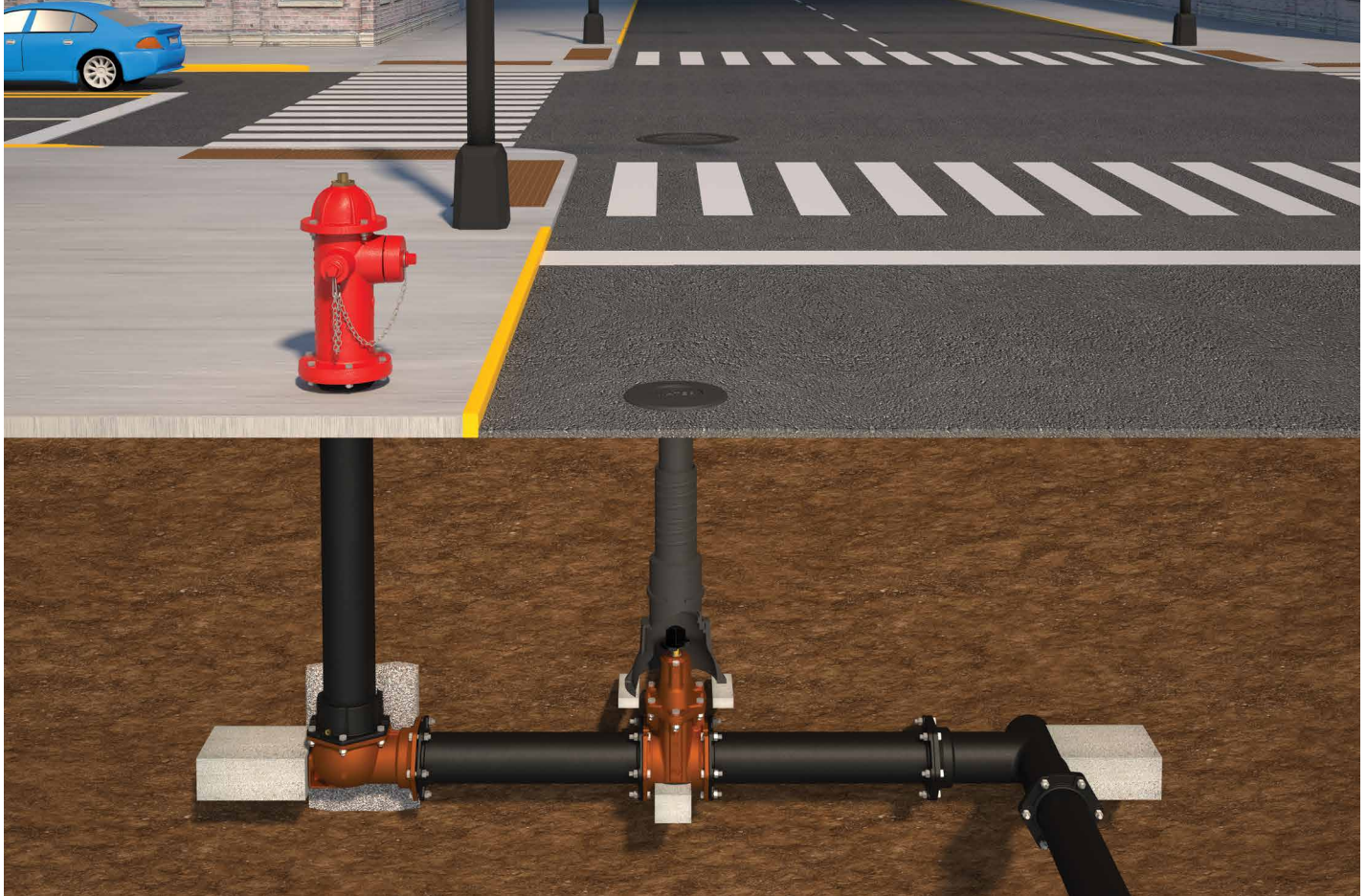
Made in the USA

Meets American Iron and Steel (AIS) requirements—please contact your Sales Representative for Buy America requirements prior to ordering.

All sales by EJ USA, Inc. are subject to and governed by the EJ USA, Inc. Terms and Conditions of Sale, which can be located at ejco.com/ustc and are hereby incorporated into this catalog by reference.

WaterMaster, FlowMaster, and SELFLEVEL are registered trademarks of EJ Group, Inc.

Water Distribution Solutions



WaterMaster® Fire Hydrants

EJ fire hydrants set the standard for reliability and ease of maintenance.



FlowMaster® Resilient Wedge Gate Valves

C515 gate valves available in 2"-24" sizes.



Valve Boxes

Domestic valve boxes, known for strength and durability.

WaterMaster® Fire Hydrants



Known for reliability in dry-barrel fire hydrants.

EJ has been providing fire hydrants and other water distribution solutions to communities since the 1920s.

Since that time, we've worked hard to maintain interchangeability so our new products can work with our old products.

Standard Features

- Pressure rated for 250 or 350 psi
- Ductile iron body
- All bolts below grade are 304 stainless steel
- Meets or exceeds the requirements of ANSI/AWWA C502, UL 246, Factory Mutual 1510, and NSF/ANSI 61 & 372.*
- 10 year limited warranty
- Made in the USA

Options

- CD or BR design
- 3-way, 2-way, or single nozzle configuration
- Variable nozzle sizes (2 1/2" – 5")
- 5 1/4" or 4 1/2" valve opening
- Operating nut (standard pentagon and square sizes, with custom options)
- Direction of opening (right or left)
- Depth of bury (2' 6" – 10')
- Color
- Shoe connection:
 - 4" – mechanical joint
 - 6" – mechanical joint, mechanical joint (bored out for sand casting), flanged end, flanged with valve attached, vertical flanged end, plain end with integral gland, plain end with integral gland with valve attached, TYTON® fittings
 - 8" – mechanical joint, mechanical joint (bored out for sand casting)
- 4.5 CD350 fire hydrant is available with a 4" or 6" mechanical joint
- 316 stainless steel
- Domestic hardware
- Extension, conversion, breakaway, and flange kits available



Ease of Maintenance

Some of the fewest parts (in unique parts and overall parts) in the industry means fewer parts to fail, keep on hand, remove during service, or cause confusion out in the field.



Made in the USA

All cast components are made and assembled in the USA.



350 psi Rated Hydrants

We're proud to offer 350 psi rated fire hydrants in our CD and BR designs. All 350 psi rated fire hydrants are also tested to twice the working pressure (700 psi).

10 Year Limited Warranty

The warranty period for hydrants and valves shall be ten years from the date of delivery.

Visit ejco.com/ustc for more information.



Learn more about this product at ejco.com/hydrant

*Contact your EJ Sales Representative for material certifications.



WaterMaster® Fire Hydrants—CD and BR Design Highlights

EJ primarily offers two styles of dry-barrel fire hydrants: CD and BR. Both designs operate nearly identically, with the most notable difference being the exterior look of the hydrant. EJ designs continue to evolve to meet the changing needs of water systems, which now include the option to have a 250 or 350 psi rated fire hydrant.

BR Design

The BR hydrant was initially adopted as the Midwest standard for dry-barrel fire hydrants. The name was derived from the breakable flanges, which are now referred to as swivel flanges.

CD Design

Learning from decades of experience with the BR design, the CD (Capital Dome) design incorporates ease of maintenance improvements while offering an alternative exterior look to a fire hydrant. The CD design is available as either a 5 1/4" or 4 1/2" hydrant.

CD Design (Cutaway view)



BR Design (Cutaway view)



10 Year
Limited
Warranty



Learn more about
this product at
ejco.com/hydrant

WaterMaster® CD Fire Hydrant Configurations

5 1/4" valve opening



5CD 3-way nozzle with optional dust cap

5CD 2-way pumper nozzle

5CD single pumper nozzle

Monitor Hydrant

EJ offers a monitor elbow for attaching a hydrant monitor. Available for the 5 1/4" CD design.



4 1/2" valve opening*



4.5CD350 3-way nozzle

4.5CD350 2-way nozzle

*Only available in 350 psi rated version

| Available Standard Nozzle Configurations for CD Design | |
|--|---|
| Size | Configuration |
| 5 1/4 | 3-way (1 pumper / 2 hose) |
| 5 1/4 | 2-way (2 pumper, 1 pumper / 1 hose, 2 hose) |
| 5 1/4 | Single (1 pumper) |
| 4 1/2 | 3-way (1 pumper / 2 hose) |
| 4 1/2 | 2-way (2 pumper, 1 pumper / 1 hose, 2 hose) |

Note: All dimensions are in inches.

WaterMaster BR Fire Hydrant Configurations

5 1/4" valve opening



5BR 3-way nozzle

5BR 2-way pumper nozzle

5BR 3-way nozzle with snow barrel

| Available Standard Nozzle Configurations for BR Design | |
|--|---|
| Size | Configuration |
| 5 1/4 | 3-way (1 pumper / 2 hose) |
| 5 1/4 | 2-way (2 pumper, 1 pumper / 1 hose, 2 hose) |

Note: All dimensions are in inches.

Features and Benefits

Unless otherwise noted, features, options, and benefits apply to both WaterMaster CD and BR designs.

CD Design



Easy Bonnet Removal

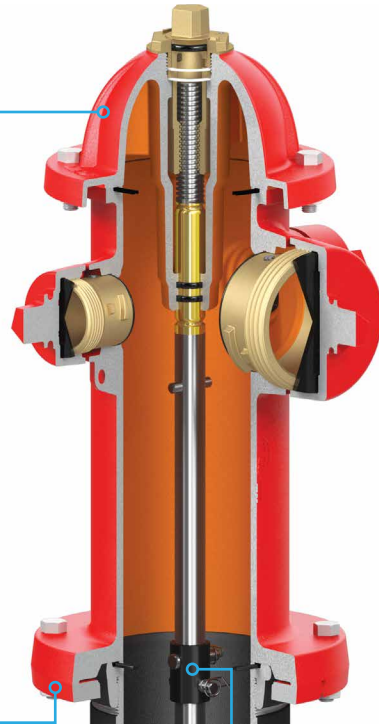
Only four bolts (for CD design, six bolts for BR design) are required to remove bonnet and perform maintenance on the hydrant.

For the CD design, one person can safely remove the standard bonnet assembly for service, weighing under 40 lb.



Swivel Flange

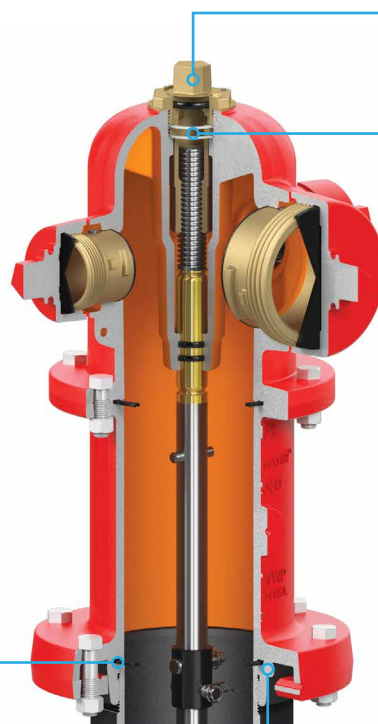
Breakable cast iron swivel flanges allow for 360° facing of the hydrant. In case of vehicular impact, their purpose is to minimize damage to the water system below.



Stem Coupling

No tools are required to remove stem coupling. The coupling has a black e-coating, which gives it better corrosion resistance and closer tolerances for a more rigid connection than traditional galvanized steel. Simply remove the cotter key and pin (350 psi coupling & cotter pins shown).

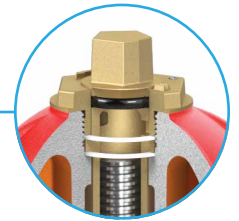
BR Design



Operating Nut

For ease of maintenance, our simple mechanism consists of a hold down nut, operating nut, and stem.

Heavy duty bronze operating nut with Acme threads is stronger and more durable than V-threads.



O-Ring Groove

O-ring groove is in the bottom of each joint. Quad-Ring® sets securely in place during maintenance and requires no taping or gluing of gaskets to the underside of nozzle standpipe when assembling. Quad-Ring has two sealing surfaces per side and remains in the groove better than round O-rings.

Self-Centering

The nozzle standpipe is self-centering when setting on the lower standpipe or an extension. This prevents O-ring damage.

Thrust Collar Washers

Anti-friction washers above and below the thrust collar of the operating nut allow for ease of operation.



Ductile Iron

Ductile iron bonnet and standpipe castings increase strength and durability while reducing overall weight.



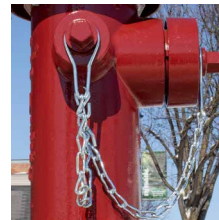
Colors

EJ meets your color specifications with a wide range of paint colors and combinations.



Lubrication

WaterMaster fire hydrants are lubricated with FDA compliant food grade lubricant.



Chains

Tough zinc plated twist link steel chains with bent rings and S-hooks secure caps to fire hydrant to prevent theft and loss.



Nozzles

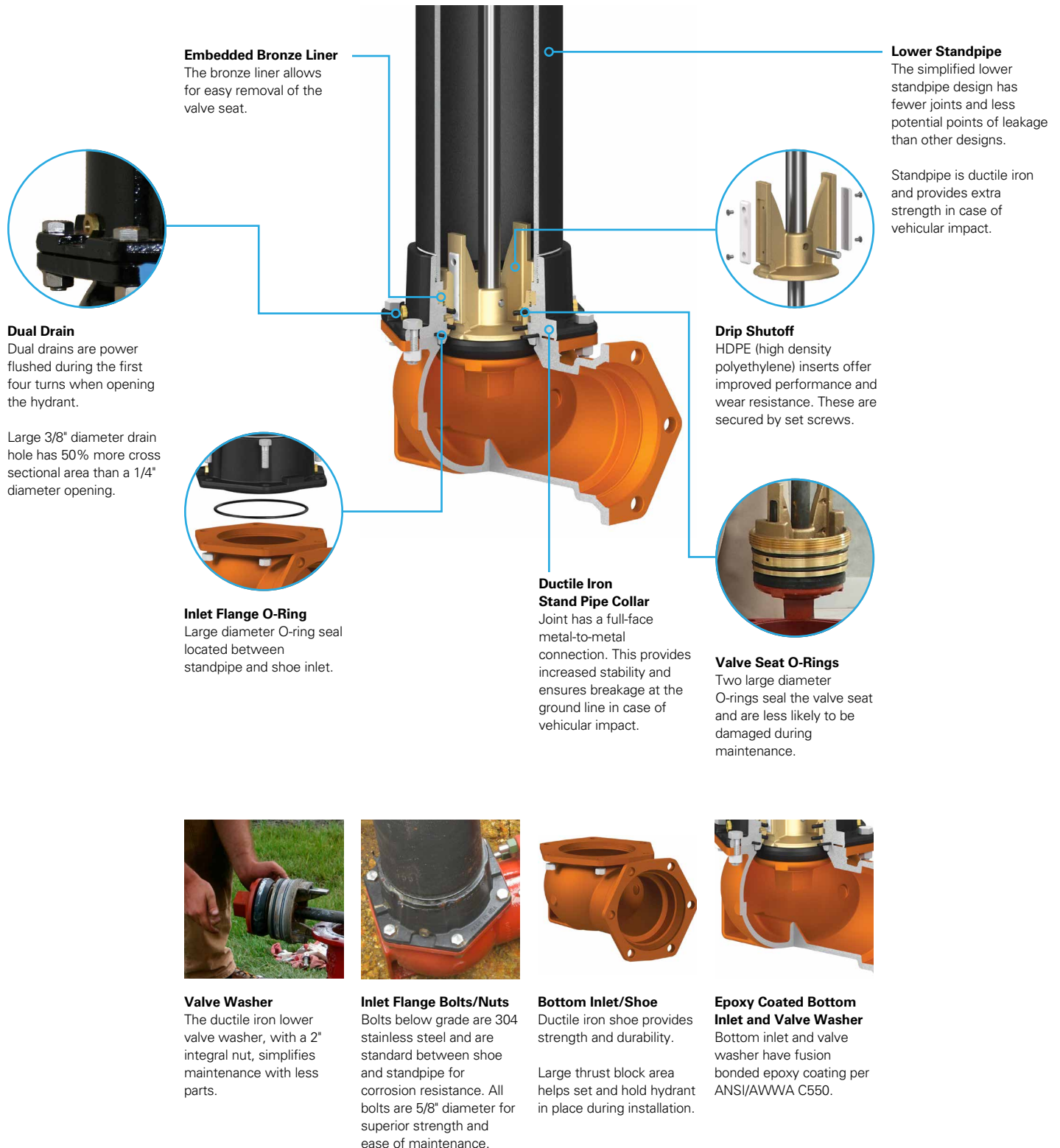
Easy to replace with removal of a single pipe plug and a quarter turn.



New Cap Design

Cleaner, modern shape gives greater protection for brass nozzles.

Quad-Ring is a registered trademark of Quadion Corporation.



Additional Options, Kits, and Tools

Bottom Inlet/Shoe Connection Types



6" mechanical joint
ANSI/AWWA C111/
A21.11



6" flanged end ANSI/
AWWA C115/21.15
Optional with auxiliary
valve attached



6" vertical flanged end
ANSI/AWWA C115/21.15



6" plain end with integral
gland. Optional with
auxiliary valve attached



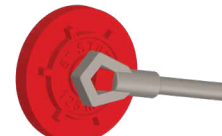
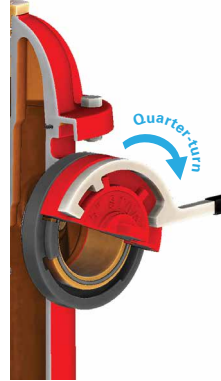
6" TYTON® fittings
TYTON® is a registered
trademark of U.S. Pipe



8" mechanical joint
ANSI/AWWA C111/
A21.11

Note: Valve assembly is not compromised by shoe replacement.

Storz Nozzle Connection



The Storz Nozzle cap can
be removed with a
standard hydrant wrench
or Storz spanner wrench.



The Storz nozzle connection provides a quarter-turn pumper nozzle attachment, matched with a ductile iron cap. Available for new or for retrofitting existing WaterMaster fire hydrants for both 4" and 5" sizes. Remove or return the cap using standard square or pent operating nut wrenches, or use a standard Storz spanner wrench

Note: Storz nozzle connection is for 250 psi rated models only.

Repair Kits, Conversion Kits, and Tools

EJ makes it easy to keep your fire hydrants working reliably for years to come. 350 psi and other conversion kits are available. Contact your EJ Sales Representative for kits and tools to maintain your fire hydrants.



Flange repair kits



Extension kits



Seal repair kits



Nozzle spanner wrenches



Hold down wrench



Stem drive wrench

Engineered for Interchangeability—350 psi Fire Hydrants

After extensive testing, design enhancements were made to the 250 psi rated fire hydrants to achieve a 350 psi rating. Engineered for interchangeability, existing WaterMaster fire hydrants can be upgraded in the field from a 250 to 350 psi working pressure.*

Stem Coupling and Cotter Pins

In the 350 psi hydrant, the diameter of the coupling pin is increased. The cotter pin is changed from a standard hairpin cotter to a ring cotter. To remove, simply grasp the tail end, turn away from the operating stem, and pull.



250 psi stem coupling



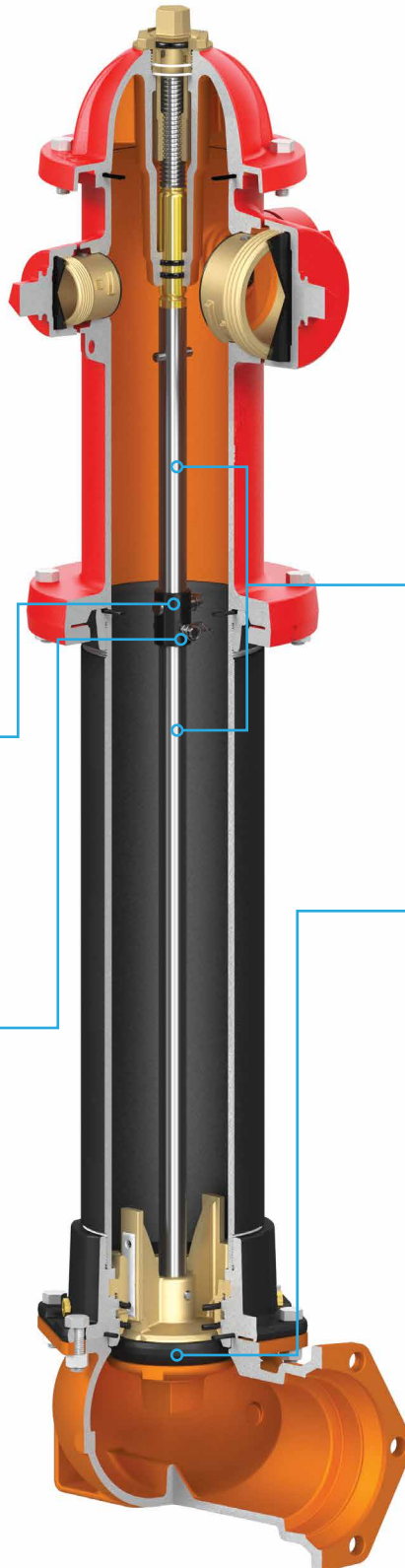
350 psi stem coupling



250 psi cotter key



350 psi ring cotter



Operating Stem

The operating stem (upper and lower parts) have larger holes to accommodate the larger diameter pins.

Seating Valve Rubber

By adding a new chamfer, the seating valve rubber can be used for both 250 and 350 psi versions, depending on its orientation. It is clearly labeled to show which side needs to face up for the pressure rating intended.



250 psi orientation

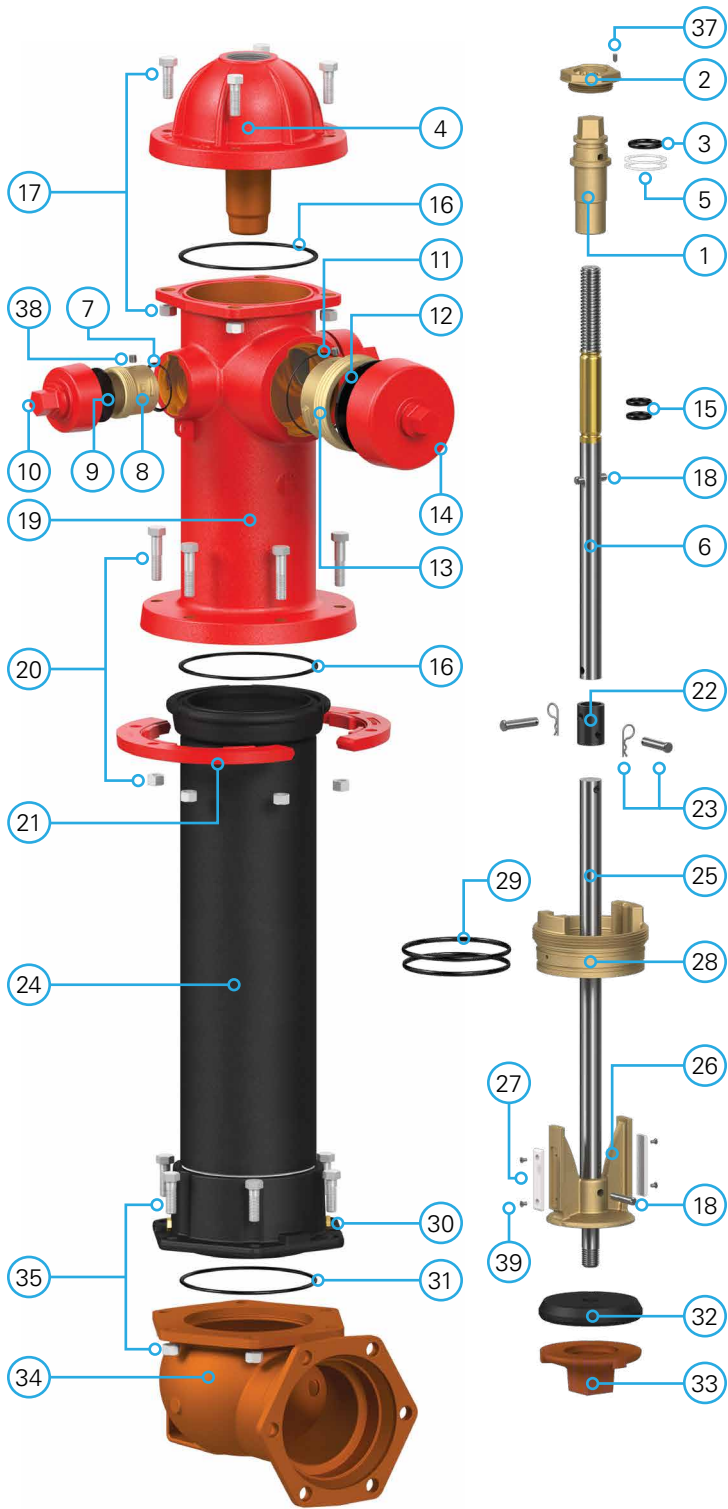


350 psi orientation

*Note: Contact your EJ Sales Representative to verify if your 250 psi specifications have other considerations for converting to 350 psi rating.

WaterMaster® 5CD250 Fire Hydrant Parts

250 psi Rated



WaterMaster 5CD250 Fire Hydrant Parts (3-Way Nozzle)

| No. | Part Description | Qty. | Part Material |
|-----|------------------------------|------|--------------------------------|
| 1 | Operating Nut | 1 | Bronze |
| 2 | Hold Down Nut | 1 | Bronze |
| 3 | Weather Seal O-Ring | 1 | Rubber, Buna-N |
| 4 | Bonnet | 1 | Ductile Iron |
| 5 | Thrust Washers | 2 | Delrin |
| 6 | Operating Stem Top 24 1/4" | 1 | Steel with Brass Collar |
| 7 | Hose Nozzle O-Rings | 2 | Rubber, Buna-N |
| 8 | Hose Nozzles | 2 | Bronze |
| 9 | Hose Nozzle Gaskets | 2 | Rubber |
| 10 | Hose Nozzle Caps | 2 | Cast Iron |
| 11 | Pumper Nozzle O-Ring | 1 | Rubber, Buna-N |
| 12 | Pumper Nozzle Gasket | 1 | Rubber |
| 13 | Pumper Nozzle | 1 | Bronze |
| 14 | Pumper Nozzle Cap | 1 | Cast Iron |
| 15 | Reservoir O-Rings | 2 | Rubber, Buna-N |
| 16 | Quad-Ring® | 2 | Rubber, Buna-N |
| 17 | Bonnet Bolts & Nuts | 4 | Zinc Plated Steel |
| 18 | Drive-Loc Pins | 2 | Stainless Steel |
| 19 | Nozzle Standpipe | 1 | Ductile Iron |
| 20 | Safety Flange Bolts & Nuts | 6 | Zinc Plated Steel |
| 21 | Swivel Flange (Frangible) | 2 | Cast Iron |
| 22 | Stem Coupling (Frangible) | 1 | E-coated Steel |
| 23 | Coupling Pins & Cotter Keys | 2 | Stainless Steel |
| 24 | Standpipe Lower Section | 1 | Ductile Iron with Bronze Liner |
| 25 | Operating Stem Lower | 1 | Steel |
| 26 | Drip Shutoff, HP* | 1 | Bronze |
| 27 | Inserts | 2 | HDPE |
| 28 | Valve Seat | 1 | Bronze |
| 29 | Valve Seat O-Rings | 2 | Rubber, Buna-N |
| 30 | Brass Drain Hole Bushings | 2 | Brass |
| 31 | Inlet Flange O-Ring | 1 | Rubber, Buna-N |
| 32 | Seating Valve Rubber | 1 | Rubber |
| 33 | Valve Washer | 1 | Ductile Iron/Epoxy |
| 34 | Bottom Inlet | 1 | Ductile Iron/Epoxy |
| 35 | Inlet Flange Bolts & Nuts | 6 | Stainless Steel |
| 36 | Chains* | 3 | Zinc Plated Steel |
| 37 | Set Screw 1/4-20 SS Cone Pt. | 1 | Stainless Steel |
| 38 | Pipe Plugs 1/4 NPTF SS HX | 3 | Stainless Steel |
| 39 | Insert Screws | 4 | Stainless Steel |

*Not Shown

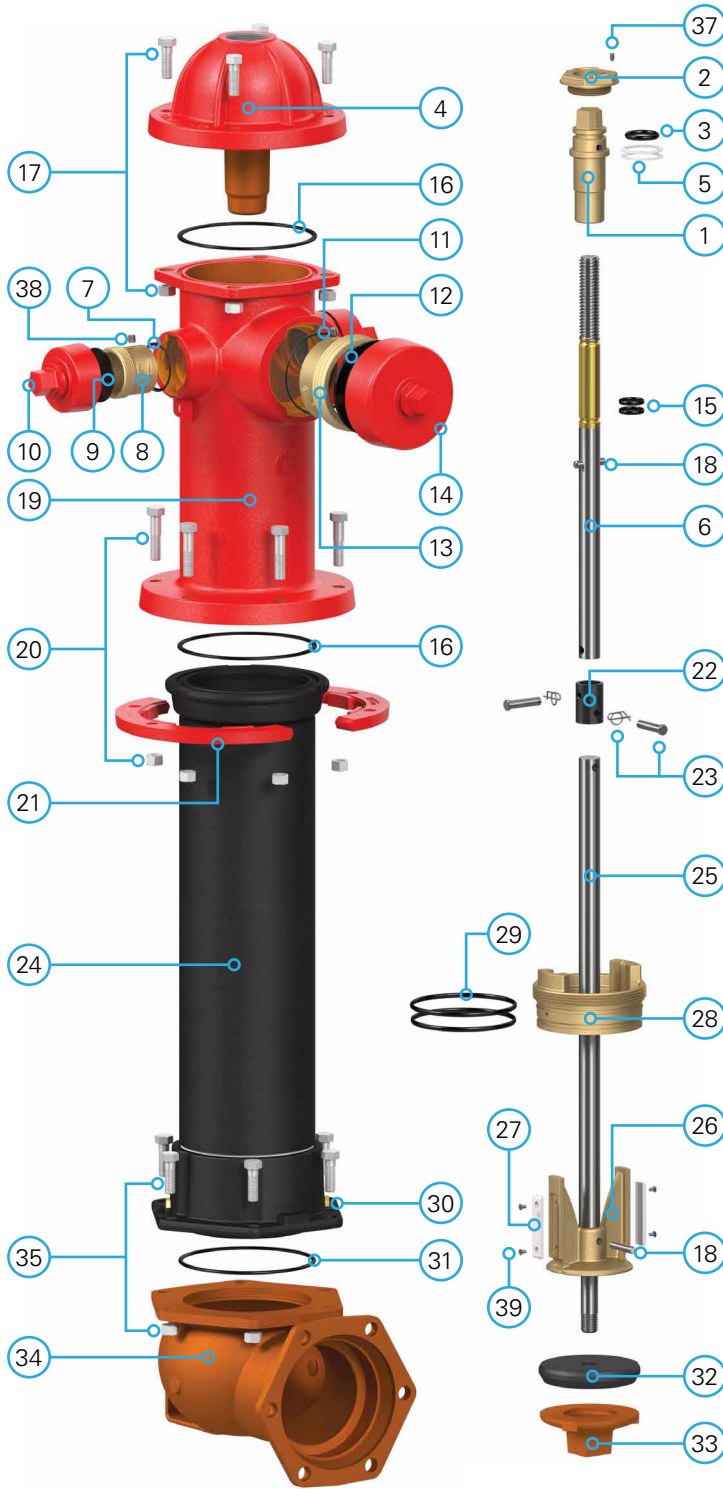
*Part sold as an assembly only (includes inserts and insert screws)

Quad-Ring is a registered trademark of Quadion Corporation.

Conforms to ANSI/AWWA Standard C502 Underwriters Laboratories Listed Factory Mutual Approved NSF/ANSI 61 & 372 Certified

WaterMaster® 5CD350 Fire Hydrant Parts

350 psi Rated



WaterMaster 5CD350 Fire Hydrant Parts (3-Way Nozzle)

| No. | Part Description | Qty. | Part Material |
|-----|----------------------------------|------|--------------------------------|
| 1 | Operating Nut | 1 | Bronze |
| 2 | Hold Down Nut | 1 | Bronze |
| 3 | Weather Seal O-Ring | 1 | Rubber, Buna-N |
| 4 | Bonnet | 1 | Ductile Iron |
| 5 | Thrust Washers | 2 | Delrin |
| 6 | Operating Stem Top 24 1/4", HP | 1 | Steel with Brass Collar |
| 7 | Hose Nozzle O-Rings | 2 | Rubber, Buna-N |
| 8 | Hose Nozzles | 2 | Bronze |
| 9 | Hose Nozzle Gaskets | 2 | Rubber |
| 10 | Hose Nozzle Caps | 2 | Cast Iron |
| 11 | Pumper Nozzle O-Ring | 1 | Rubber, Buna-N |
| 12 | Pumper Nozzle Gasket | 1 | Rubber |
| 13 | Pumper Nozzle | 1 | Bronze |
| 14 | Pumper Nozzle Cap | 1 | Cast Iron |
| 15 | Reservoir O-Rings | 2 | Rubber, Buna-N |
| 16 | Quad-Ring® | 2 | Rubber, Buna-N |
| 17 | Bonnet Bolts & Nuts | 4 | Zinc Plated Steel |
| 18 | Drive-Loc Pins | 2 | Stainless Steel |
| 19 | Nozzle Standpipe | 1 | Ductile Iron |
| 20 | Safety Flange Bolts & Nuts | 6 | Zinc Plated Steel |
| 21 | Swivel Flange (Frangible) | 2 | Cast Iron |
| 22 | Stem Coupling (Frangible), HP | 1 | E-coated Steel |
| 23 | Coupling Pins & Ring Cotters, HP | 2 | Stainless Steel |
| 24 | Standpipe Lower Section | 1 | Ductile Iron with Bronze Liner |
| 25 | Operating Stem Lower, HP | 1 | Steel |
| 26 | Drip Shutoff, HP† | 1 | Bronze |
| 27 | Inserts | 2 | HDPE |
| 28 | Valve Seat | 1 | Bronze |
| 29 | Valve Seat O-Rings | 2 | Rubber, Buna-N |
| 30 | Brass Drain Hole Bushings | 2 | Brass |
| 31 | Inlet Flange O-Ring | 1 | Rubber, Buna-N |
| 32 | Seating Valve Rubber | 1 | Rubber |
| 33 | Valve Washer | 1 | Ductile Iron/Epoxy |
| 34 | Bottom Inlet | 1 | Ductile Iron/Epoxy |
| 35 | Inlet Flange Bolts & Nuts | 6 | Stainless Steel |
| 36 | Chains* | 3 | Zinc Plated Steel |
| 37 | Set Screw 1/4-20 SS Cone Pt. | 1 | Stainless Steel |
| 38 | Pipe Plugs 1/4 NPTF SS HX | 3 | Stainless Steel |
| 39 | Insert Screws | 4 | Stainless Steel |

*Not Shown

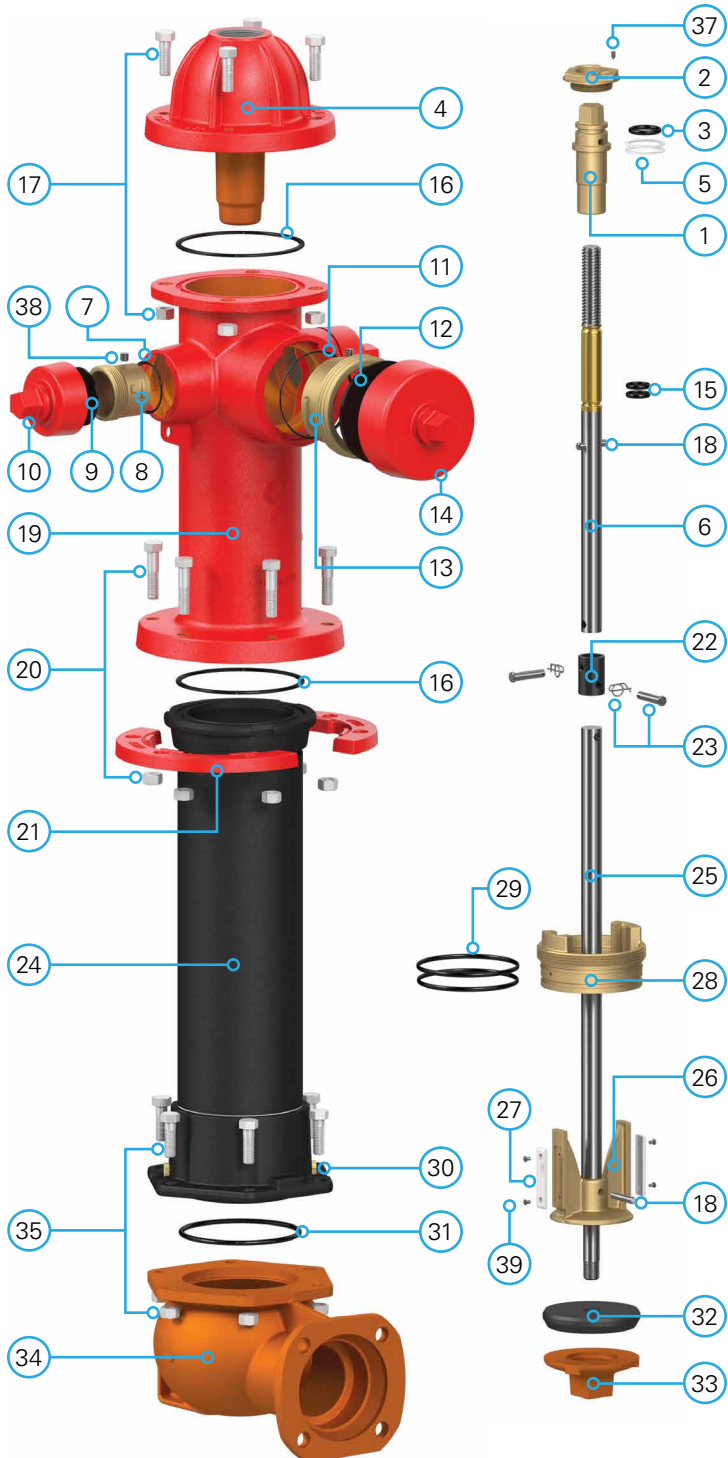
†Part sold as an assembly only (includes inserts and insert screws)

Quad-Ring is a registered trademark of Quadion Corporation.

Conforms to ANSI/AWWA Standard C502 Underwriters Laboratories Listed NSF/ANSI 61 & 372 Certified

WaterMaster® 4.5CD350 Fire Hydrant Parts

350 psi Rated



WaterMaster 4.5CD350 Fire Hydrant Parts (3-Way Nozzle)

| No. | Part Description | Qty. | Part Material |
|-----|----------------------------------|------|--------------------------------|
| 1 | Operating Nut | 1 | Bronze |
| 2 | Hold Down Nut | 1 | Bronze |
| 3 | Weather Seal O-Ring | 1 | Rubber, Buna-N |
| 4 | Bonnet | 1 | Ductile Iron |
| 5 | Thrust Washers | 2 | Delrin |
| 6 | Operating Stem Top 24 1/4", HP | 1 | Steel with Brass Collar |
| 7 | Hose Nozzle O-Rings | 2 | Rubber, Buna-N |
| 8 | Hose Nozzles | 2 | Bronze |
| 9 | Hose Nozzle Gaskets | 2 | Rubber |
| 10 | Hose Nozzle Caps | 2 | Cast Iron |
| 11 | Pumper Nozzle O-Ring | 1 | Rubber, Buna-N |
| 12 | Pumper Nozzle Gasket | 1 | Rubber |
| 13 | Pumper Nozzle | 1 | Bronze |
| 14 | Pumper Nozzle Cap | 1 | Cast Iron |
| 15 | Reservoir O-Rings | 2 | Rubber, Buna-N |
| 16 | Quad-Ring® | 2 | Rubber, Buna-N |
| 17 | Bonnet Bolts & Nuts | 4 | Zinc Plated Steel |
| 18 | Drive-Loc Pins | 2 | Stainless Steel |
| 19 | Nozzle Standpipe | 1 | Ductile Iron |
| 20 | Safety Flange Bolts & Nuts | 6 | Zinc Plated Steel |
| 21 | Swivel Flange (Frangible) | 2 | Cast Iron |
| 22 | Stem Coupling (Frangible), HP | 1 | E-coated Steel |
| 23 | Coupling Pins & Ring Cotters, HP | 2 | Stainless Steel |
| 24 | Standpipe Lower Section | 1 | Ductile Iron with Bronze Liner |
| 25 | Operating Stem Lower, HP | 1 | Steel |
| 26 | Drip Shutoff, HP† | 1 | Bronze |
| 27 | Inserts | 2 | HDPE |
| 28 | Valve Seat | 1 | Bronze |
| 29 | Valve Seat O-Rings | 2 | Rubber, Buna-N |
| 30 | Brass Drain Hole Bushings | 2 | Brass |
| 31 | Inlet Flange O-Ring | 1 | Rubber, Buna-N |
| 32 | Seating Valve Rubber | 1 | Rubber |
| 33 | Valve Washer | 1 | Ductile Iron/Epoxy |
| 34 | Bottom Inlet | 1 | Ductile Iron/Epoxy |
| 35 | Inlet Flange Bolts & Nuts | 6 | Stainless Steel |
| 36 | Chains* | 3 | Zinc Plated Steel |
| 37 | Set Screw 1/4-20 SS Cone Pt. | 1 | Stainless Steel |
| 38 | Pipe Plugs 1/4 NPTF SS HX | 3 | Stainless Steel |
| 39 | Insert Screws, HP | 4 | Stainless Steel |

*Not Shown

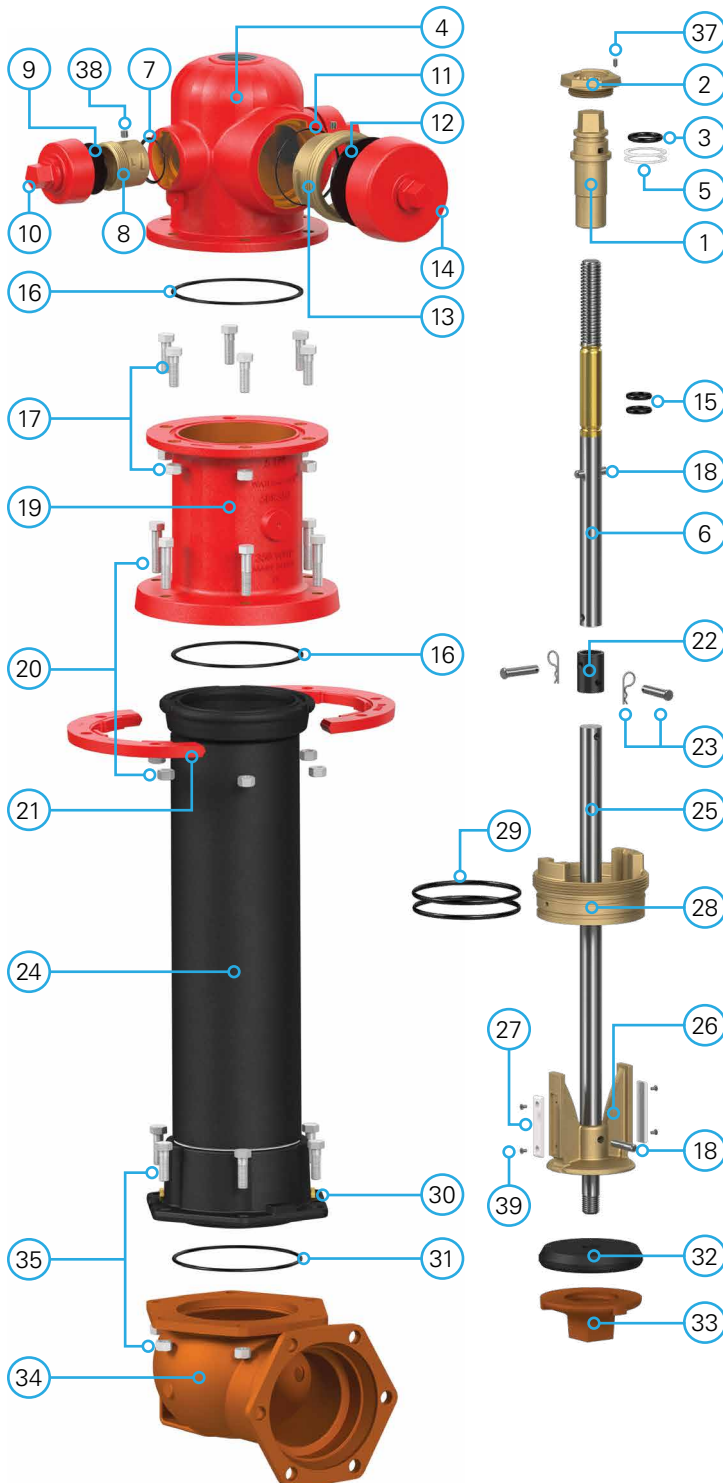
†Part sold as an assembly only (includes inserts and insert screws)

Quad-Ring is a registered trademark of Quadion Corporation.

Conforms to ANSI/AWWA Standard C502 Underwriters Laboratories Listed NSF/ANSI 61 & 372 Certified

WaterMaster® 5BR250 Fire Hydrant Parts

250 psi Rated



WaterMaster 5BR250 Hydrant Parts (3-Way Nozzle)

| No. | Part Description | Qty | Part Material |
|-----|--------------------------------|-----|--------------------------------|
| 1 | Operating Nut | 1 | Bronze |
| 2 | Hold Down Nut | 1 | Bronze |
| 3 | Weather Seal O-Ring | 1 | Rubber, Buna-N |
| 4 | Bonnet | 1 | Ductile Iron |
| 5 | Thrust Washers | 2 | Delrin |
| 6 | Operating Stem Top 21 1/2" | 1 | Steel with Brass Collar |
| 7 | Hose Nozzle O-Rings | 2 | Rubber, Buna-N |
| 8 | Hose Nozzles | 2 | Bronze |
| 9 | Hose Nozzle Gaskets | 2 | Rubber |
| 10 | Hose Nozzle Caps | 2 | Cast Iron |
| 11 | Pumper Nozzle O-Ring | 1 | Rubber, Buna-N |
| 12 | Pumper Nozzle Gasket | 1 | Rubber |
| 13 | Pumper Nozzle | 1 | Bronze |
| 14 | Pumper Nozzle Cap | 1 | Cast Iron |
| 15 | Reservoir O-Rings | 2 | Rubber, Buna-N |
| 16 | Quad-Ring® | 2 | Rubber, Buna-N |
| 17 | Bonnet Bolts & Nuts | 6 | Zinc Plated Steel |
| 18 | Drive-Loc Pins | 2 | Stainless Steel |
| 19 | Traffic Standpipe Upper | 1 | Ductile Iron |
| 20 | Safety Flange Bolts & Nuts | 6 | Zinc Plated Steel |
| 21 | Swivel Flanges (Frangible) | 2 | Cast Iron |
| 22 | Stem Coupling (Frangible) | 1 | E-coated Steel |
| 23 | Coupling Pin & Cotter Keys | 2 | Stainless Steel |
| 24 | Standpipe Lower Section | 1 | Ductile Iron with Bronze Liner |
| 25 | Operating Stem Lower | 1 | Steel |
| 26 | Drip Shutoff, HP† | 1 | Bronze |
| 27 | Inserts | 2 | HDPE |
| 28 | Valve Seat | 1 | Bronze |
| 29 | Valve Seat O-Rings | 2 | Rubber, Buna-N |
| 30 | Brass Drain Hole Bushings | 2 | Brass |
| 31 | Inlet Flange O-Ring | 1 | Rubber, Buna-N |
| 32 | Seating Valve Rubber | 1 | Rubber |
| 33 | Valve Washer | 1 | Ductile Iron/Epoxy |
| 34 | Bottom Inlet | 1 | Ductile Iron/Epoxy |
| 35 | Inlet Flange Bolts & Nuts | 6 | Stainless Steel |
| 36 | Chains* | 3 | Zinc Plated Steel |
| 37 | Set Screw 1/4 - 20 SS Cone Pt. | 1 | Stainless Steel |
| 38 | Pipe Plugs 1/4 NPTF SS HX | 3 | Stainless Steel |
| 39 | Insert Screws | 4 | Stainless Steel |

*Not Shown

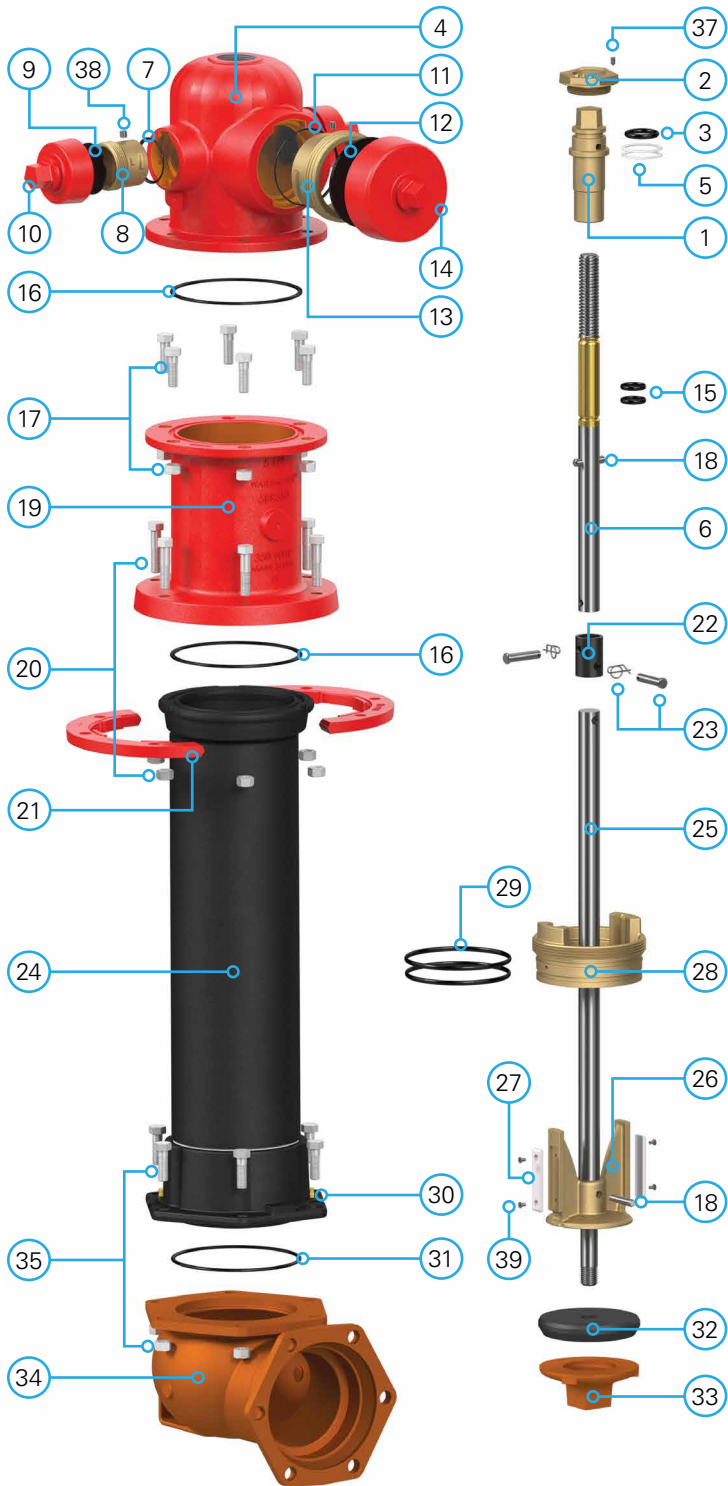
†Part sold as an assembly only (includes inserts and insert screws)

Quad-Ring is a registered trademark of Quadion Corporation.

Conforms to ANSI/AWWA Standard C502 Underwriters Laboratories Listed Factory Mutual Approved NSF/ANSI 61 & 372 Certified

WaterMaster® 5BR350 Fire Hydrant Parts

350 psi Rated



WaterMaster 5BR350 Fire Hydrant Parts (3-Way Nozzle)

| No. | Part Description | Qty. | Part Material |
|-----|--|------|--------------------------------|
| 1 | Operating Nut | 1 | Bronze |
| 2 | Hold Down Nut | 1 | Bronze |
| 3 | Weather Seal O-Ring | 1 | Rubber, Buna-N |
| 4 | Bonnet | 1 | Ductile Iron |
| 5 | Thrust Washers | 2 | Delrin |
| 6 | High Pressure Operating Stem Top 21 1/4", HP | 1 | Steel with Brass Collar |
| 7 | Hose Nozzle O-Rings | 2 | Rubber, Buna-N |
| 8 | Hose Nozzles | 2 | Bronze |
| 9 | Hose Nozzle Gaskets | 2 | Rubber |
| 10 | Hose Nozzle Caps | 2 | Cast Iron |
| 11 | Pumper Nozzle O-Ring | 1 | Rubber, Buna-N |
| 12 | Pumper Nozzle Gasket | 1 | Rubber |
| 13 | Pumper Nozzle | 1 | Bronze |
| 14 | Pumper Nozzle Cap | 1 | Cast Iron |
| 15 | Reservoir O-Rings | 2 | Rubber, Buna-N |
| 16 | Quad-Ring® | 2 | Rubber, Buna-N |
| 17 | Bonnet Bolts & Nuts | 6 | Zinc Plated Steel |
| 18 | Drive-Loc Pins | 2 | Stainless Steel |
| 19 | Traffic Standpipe Upper | 1 | Ductile Iron |
| 20 | Safety Flange Bolts & Nuts | 6 | Zinc Plated Steel |
| 21 | Swivel Flange (Frangible) | 2 | Cast Iron |
| 22 | Stem Coupling (Frangible), HP | 1 | E-coated Steel |
| 23 | Coupling Pins & Ring Cotters, HP | 2 | Stainless Steel |
| 24 | Standpipe Lower Section | 1 | Ductile Iron with Bronze Liner |
| 25 | Operating Stem Lower, HP | 1 | Steel |
| 26 | Drip Shutoff, HP† | 1 | Bronze |
| 27 | Inserts | 2 | HDPE |
| 28 | Valve Seat | 1 | Bronze |
| 29 | Valve Seat O-Rings | 2 | Rubber, Buna-N |
| 30 | Brass Drain Hole Bushings | 2 | Brass |
| 31 | Inlet Flange O-Ring | 1 | Rubber, Buna-N |
| 32 | Seating Valve Rubber | 1 | Rubber |
| 33 | Valve Washer | 1 | Ductile Iron/Epoxy |
| 34 | Bottom Inlet | 1 | Ductile Iron/Epoxy |
| 35 | Inlet Flange Bolts & Nuts | 6 | Stainless Steel |
| 36 | Chains* | 3 | Zinc Plated Steel |
| 37 | Set Screw 1/4-20 SS Cone Pt. | 1 | Stainless Steel |
| 38 | Pipe Plugs 1/4 NPTF SS HX | 3 | Stainless Steel |
| 39 | Insert Screws | 4 | Stainless Steel |

*Not Shown

†Part sold as an assembly only (includes inserts and insert screws)

Quad-Ring is a registered trademark of Quadion Corporation.

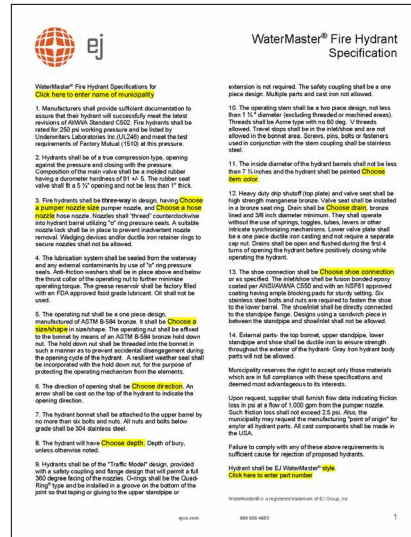
Conforms to ANSI/AWWA Standard C502 Underwriters Laboratories Listed NSF/ANSI 61 & 372 Certified

Additional Resources

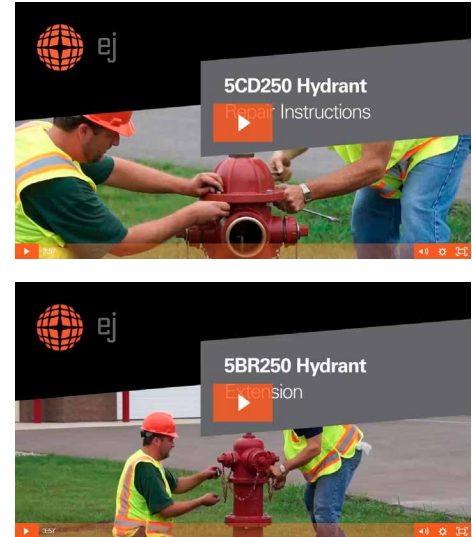
Visit ejco.com or scan the QR code below for more information on specifying and maintaining WaterMaster fire hydrants.



Learn more at
ejco.com/hydrant

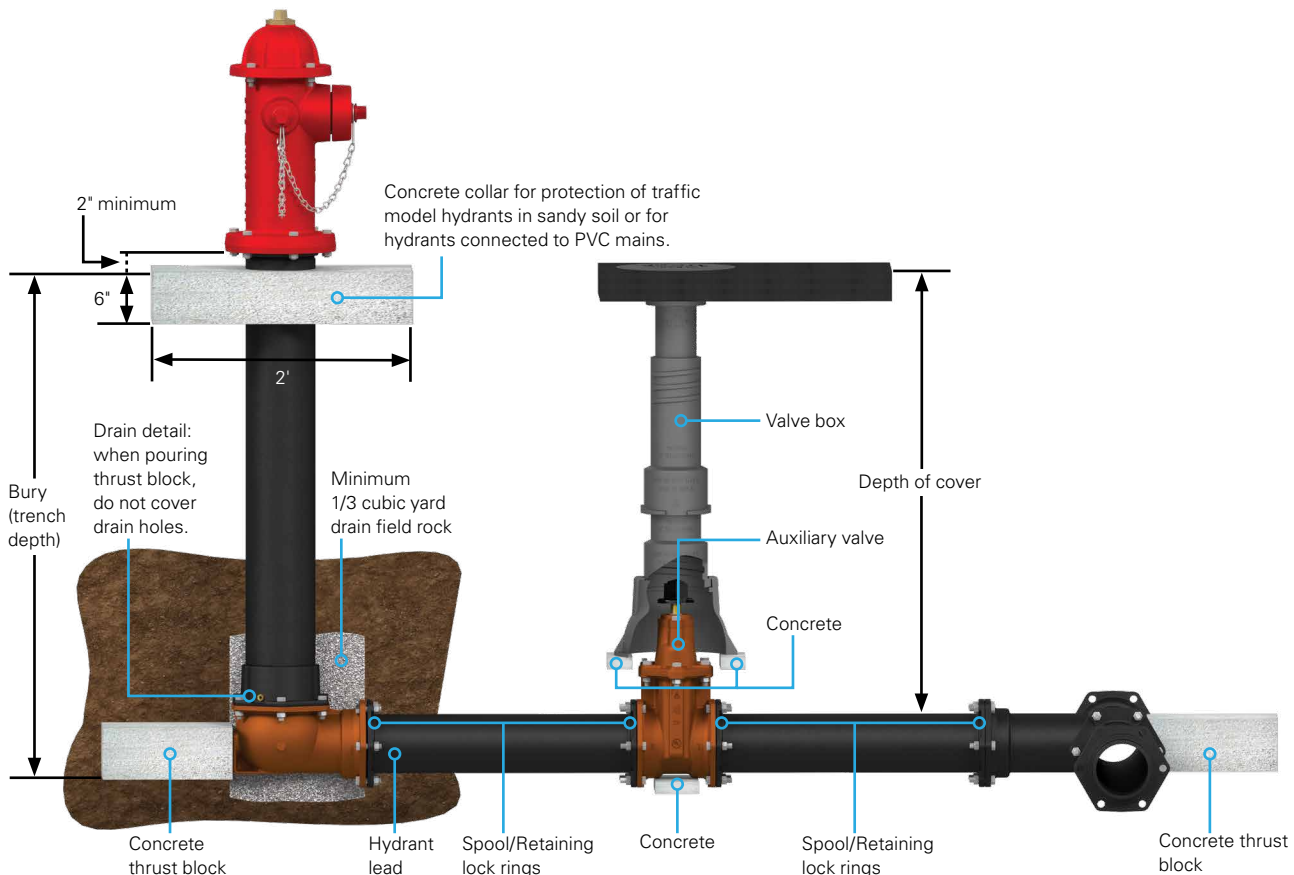


WaterMaster fire hydrant specification



WaterMaster fire hydrant repair and extension instruction videos.

Typical Hydrant Installation



FlowMaster® Resilient Wedge Gate Valves



A blend of quality parts, and a durable, rugged design.

FlowMaster® resilient wedge gate valves are an ideal choice for water lines because they are slow to open and close, which reduces line chatter. This product comes standard with a 10 year warranty and is made in the USA out of high quality ductile iron, with a rugged design that will stand up to years of service.

There is a full range of sizes from 2" through 24" that exceed AWWA Standard C515 and C153. Contact your EJ Sales Representative for material certifications.

Standard Features

- Ductile iron body, bonnet, seal plate and wedge are manufactured from iron conforming to ASTM A536
- The operating stem is manufactured from high-strength manganese bronze
- Meets or exceeds the performance requirements of AWWA C515 and Underwriters Laboratories Standards UL262
- Wall thickness exceeds AWWA Standard C515 and C153
- Body, bonnet and seal plate are epoxy coated in accordance with ANSI/AWWA C550 certified to NSF 61
- Wedge is fully rubber encapsulated to meet ASTM D429 requirements
- 10 year limited warranty
- Made in the USA

Options

- End connections (mechanical joint, flanged end, tapping, TYTON®, or threaded)
- Sizes available 2" through 24"
- Handwheel
- Bevel or spur gear operators (20" and 24")
- Indicator post valve
- Cut-in valve for oversized pipe
- Stainless steel and low zinc stems (for 2"-16" valves)



10 Year Limited Warranty

The warranty period for hydrants and valves shall be ten years from the date of delivery.

Visit ejco.com/ustc for more information.

Made in the USA

All cast components are made and assembled in the USA.



Learn more about this product at ejco.com/valve

TYTON is a registered trademark of U.S. Pipe.



2"-16" Features and Benefits

Bolts

All nuts and bolts come standard as 304 stainless steel (316 stainless steel is optional).

Thrust Washers

Two thrust washers ensure easy low torque operation and years of trouble-free operation.

Stem

2" - 16" have high-strength manganese bronze stem (with integral thrust collar) and stem nut.

2" Operating/Wrench Nut

Bolted to top of squared off stem (optional hand wheels available).

External Stem Seal

Designed to prevent sand or grit from working between the stem and seal plate.

Triple O-Ring Seal

Three stem seal O-rings; two in the seal plate, which are replaceable with the valve in the full open position at rated working pressure, and one under the stem thrust collar.

Epoxy Coating

Fusion bonded epoxy coating provides outstanding corrosion resistance on all surfaces inside and out per AWWA C550.

C515 Ductile Iron Construction

The all ductile iron body, bonnet and seal plate feature the corrosion resistance and long service life of gray iron, but also increased strength, toughness and impact resistance with less weight. Pressure rated for 250 psi and tested for 500 psi performance, which meets or exceeds AWWA C515. All cast components are made in the USA.

Ductile Wedge

The wedge is ductile iron and is fully rubber encapsulated meeting the requirements of ASTM D429. A ductile wedge is better able to handle waterline pressure and surges, while the permanent rubber coating ensures a watertight seal.

Wedge Guides

Specially designed to reduce input torque required for operation and resist interference from debris in the waterway and protects the wedge from wear after years of service.

Full Diameter Waterway

Oversized for smooth unobstructed flow and will accommodate full sized shell cutter.

UL/FM

All valves are manufactured to meet Underwriters Laboratories 262 and Factory Mutual 1120/1130. 4", 6", and 8" valves are UL listed and 4" - 12" are FM approved.

NSF

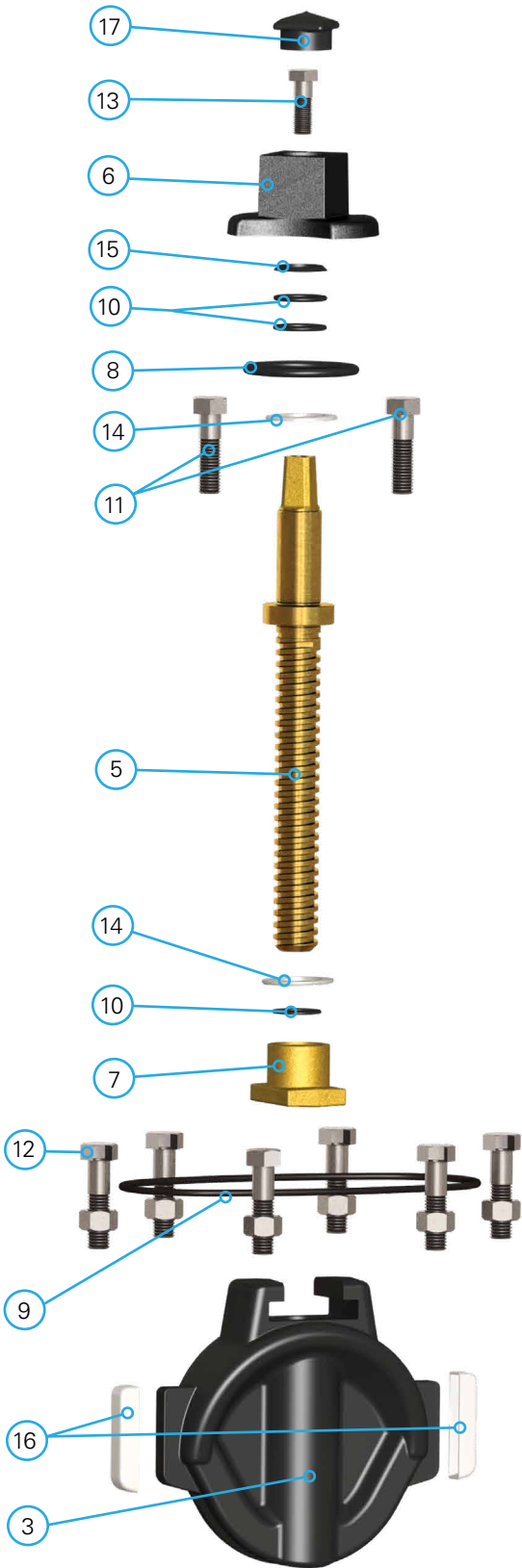
Certified to NSF/ANSI Standard 61 & 372.

**10 Year
Limited
Warranty**

End Connections

Available in 2" - 24" sizes. See page 23 for available end connections.

2"-16" FlowMaster® Valve Parts



FlowMaster Valve Parts

| Item No. | Qty. | Part Name and Description | Material |
|----------|------|-----------------------------------|-----------------------------------|
| 1* | 1 | Body | Ductile Iron |
| 2* | 1 | Bonnet | Ductile Iron |
| 3 | 1 | Rubber Encapsulated Ductile Wedge | Ductile Iron/ Synthetic Rubber |
| 4* | 1 | Seal Plate | Ductile Iron |
| 5 | 1 | Stem | Manganese Bronze |
| 6 | 1 | Operating Nut | Gray Iron |
| 7 | 1 | Stem Nut | Manganese Bronze |
| 8 | 1 | Seal Plate O-ring | Rubber, Buna-N |
| 9 | 1 | Bonnet O-ring | Rubber, Buna-N |
| 10 | 3 | Stem O-rings | Rubber, Buna-N |
| 11 | 1 | Seal Plate Bolts | Stainless Steel |
| 12 | 1 | Bonnet Bolts/Nuts | Stainless Steel |
| 13 | 1 | Large Hex Cap Screw | Stainless Steel |
| 14 | 2 | Thrust Washers | Polymer |
| 15 | 1 | External Stem Seal | Rubber, Buna-N |
| 16 | 1 | Wedge Guides | Polymer |
| 17 | 1 | Dust Cap | Rubber |

*Note shown

Options

- Handwheel
- Bevel gear operator - 16" only
- Spur gear operator - 16" only
- 2" AWWA operating nut
- Stainless steel stem
- Low zinc steel stem
- Post indicator kit

End Connections

- MJ x MJ
- FE x FE
- MJ x FE
- MJ x TAP
- TY x TY
- TY x FE
- THD x THD — 2" only



FlowMaster valves incorporate quality parts and a simple design. Each valve is inspected and individually tested. All cast components are made and assembled in the USA.

20" and 24" Features and Benefits

Options

- Bevel gear operator
- Spur gear operator
- Handwheel
- 2" AWWA operating nut

End Connections

- MJ x MJ
- FE x FE
- MJ x FE
- MJ x TAP



Installation of 24" resilient wedge gate valve

AWWA C515

The all ductile iron body, bonnet and seal plate resists corrosion and offers the same long service life as gray iron, but with less weight. It has increased strength, toughness and impact resistance. Each valve is pressure rated for 250 psi and tested for 500 psi performance which meets or exceeds AWWA C515.

Stem

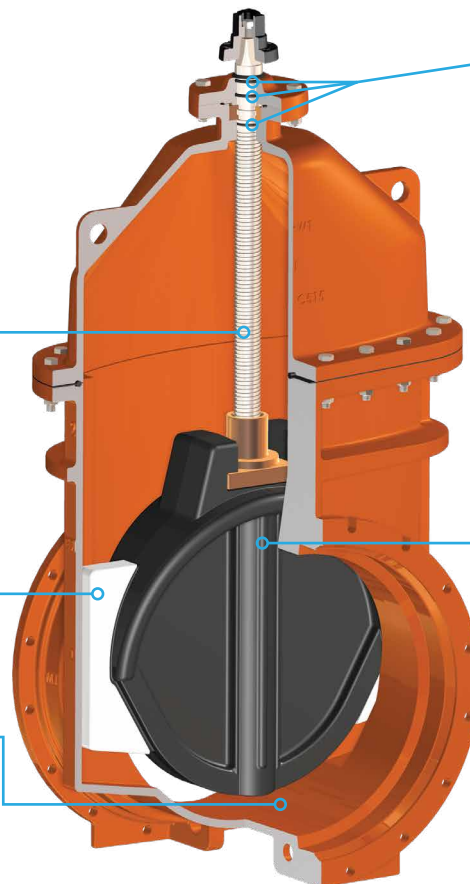
The stem is made of high-strength 304 stainless steel and is lead free.

Wedge Guides

Specially designed wedge guides reduce input torque required for operation. The guides also resist interference from debris in the waterway and protect the wedge from wear after years of service.

Full Diameter Waterway

The full diameter waterway is oversized, providing a smooth unobstructed flow and also accommodates a full sized shell cutter.



Triple O-Ring Seal

Three stem seal O-rings; two in the seal plate, which are replaceable with the valve in the full open position at rated working pressure, and one under the stem thrust collar.

Epoxy Coating

Fusion bonded epoxy coating provides outstanding corrosion resistance on all surfaces inside and out per AWWA C550 and is NSF 61 certified.

Ductile Wedge

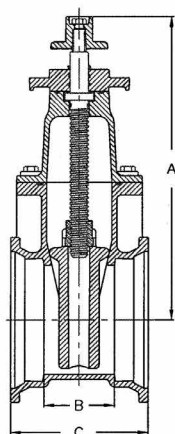
The ductile iron wedge is rubber encapsulated which meets the requirements of ASTM D429. A ductile wedge is better able to handle waterline pressure and surges, while the permanent rubber coating ensures a watertight seal.

Bolts

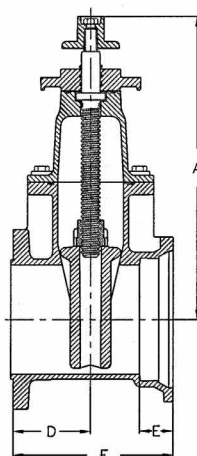
All standard nuts and bolts are made of 304 stainless steel (316 stainless steel is optional).

**10 Year
Limited Warranty**

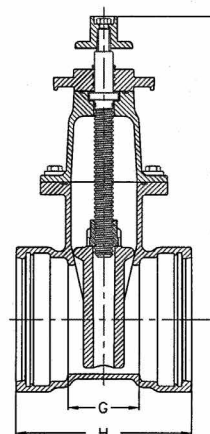
FlowMaster® Gate Valve Dimensions and Available End Connections



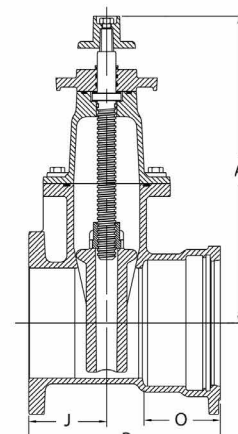
MJ x MJ



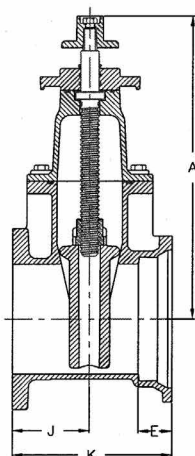
MJ x Tapping



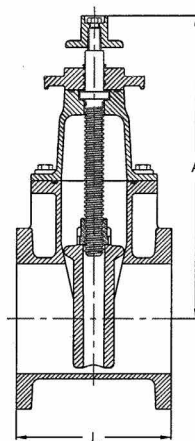
TYTON® x TYTON®



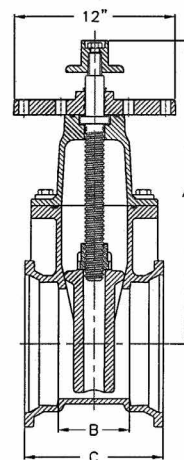
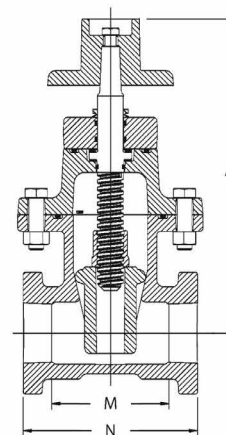
TYTON® x Flange



MJ x Flange



Flange x Flange

MJ x MJ
Post Indicator Valve

THD x THD

FlowMaster Gate Valve Dimensions and Available End Connections

| Size | A | B | C | D | E | F | G | H | J | K | L | M | N | O | P | Open Turns |
|------|----------|--------|--------|--------|-------|---------|--------|--------|---------|---------|--------|-------|-------|-------|----------|------------|
| 2" | 10 5/8 | 3 1/2 | 8 1/2 | | | | | | | | | 3 7/8 | 5 7/8 | | | 10 |
| 3" | 13 1/8 | 4 3/4 | 9 3/4 | | | | | | | | | | | | | 14 |
| 4" | 15 | 4 5/16 | 9 5/16 | 5 1/16 | 2 1/2 | 10 5/16 | 4 3/8 | 11 | 5 1/16* | 10 5/16 | 9 | | | 4 1/8 | 10 15/16 | 17 |
| 6" | 18 9/16 | 4 | 9 | 5 1/4 | 2 1/2 | 11 1/4 | 4 | 11 1/8 | 5 1/4 | 11 1/4 | 10 1/2 | | | 4 3/8 | 11 3/4 | 20 |
| 8" | 22 11/16 | 5 1/4 | 10 1/4 | 5 3/4 | 2 1/2 | 11 7/8 | 5 1/4 | 13 | 5 3/4 | 11 7/8 | 11 1/2 | | | 5 5/8 | 14 1/8 | 26 |
| 10" | 27 | 6 7/8 | 11 5/8 | 6 1/2 | 3 1/2 | 13 1/2 | 6 7/8 | 15 5/8 | 6 1/2 | 13 1/2 | 13 | | | 5 5/8 | 15 9/16 | 32 |
| 12" | 31 1/8 | 8 | 13 | 7 | 2 1/2 | 14 3/4 | 8 | 16 1/2 | 7 | 14 3/4 | 14 | | | 5 5/8 | 16 11/16 | 38 |
| 14" | 35 1/4 | 12 1/2 | 19 1/2 | | 3 1/2 | | | | 8 1/2 | | 17 | | | | | 48 |
| 16" | 39 1/2 | 14 1/2 | 21 3/4 | 8 1/2 | 3 1/2 | 19 3/8 | 10 5/8 | 21 | 8 1/2 | 19 3/8 | 17 | | | | | 51 |
| 20" | 48 7/16 | 11 | 18 | 9 | 3 1/2 | 18 | | | | 18 | 18 | | | | | 62 |
| 24" | 57 | 16 | 23 | 10 | 3 1/2 | 21 1/2 | | | | 21 1/2 | 20 | | | | | 74 |

Note: All dimensions are in inches.

TYTON® is a registered trademark of U.S. Pipe.

*4" TYTON® x FLANGE is 4 1/2"

2" - 16" FlowMaster® Resilient Wedge Gate Valves Sample Specification

Valves shall be manufactured and tested to meet the requirements of ANSI/AWWA C515. Valves shall meet or exceed the requirements of Underwriters Laboratories Standard UL262 and Factory Mutual Standard 1120/1130 (for open left models).

Valves shall be certified to NSF/ANSI 61 & 372.

The rated working pressure of the valve shall be 250 or 350 psi depending on size.

All valve component castings shall originate in the USA.

The body, bonnet, wedge and seal plate shall be made of ductile iron in accordance with ASTM A536. The wedge shall be totally encapsulated in rubber. This rubber coating shall be permanently bonded to the ductile iron wedge casting and shall meet ASTM D429 tests for rubber to metal bonding. No paint shall be allowed in the wedge and the wedge must not be hollow. Containment of the stem nut must only be on two sides to facilitate easy removal.

There shall be three stem seal O-rings; two in the seal plate which shall be replaceable with the valve in the full open position at rated working pressure, and one under the stem thrust collar. All gaskets shall be O-ring seals. O-rings set in a cartridge shall not be allowed. A grit seal must be present above the seal plate to prevent dirt intrusion.

Valves are to be open [left or right]. Operating nuts are to be painted [black for open left or red for open right]. The NRS valves shall be provided with a 2" square operating nut (2" - 24").

2" - 16" valves must have two polymer thrust washers — one above and one below the thrust collar. Stainless steel thrust washers are not acceptable.

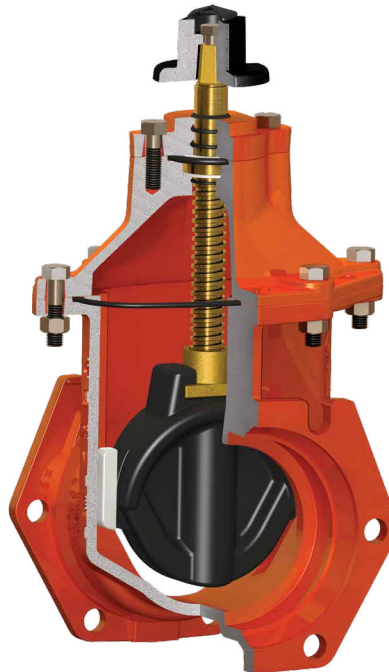
All fasteners are to be 304 stainless steel. Socket head bolts shall not be allowed. If only two bolts are used to secure the seal plate, the bolts must be fastened to the bonnet with a drilled and tapped hole in the bonnet.

The body, bonnet and seal plate shall be epoxy coated in accordance with ANSI/AWWA C550 certified to NSF 61. This coating shall be on the interior and the exterior of the valve. The manufacturers name, valve size, year of manufacture, pressure rating ("250W" or "350W"), C515 and "DI" shall be cast on the valve.

Each valve shall be tested in accordance with ANSI/AWWA C515, UL262 and FM 1120/1130. This shall include hydrostatic pressure testing at 2 times rated working pressure. A certification of manufacture and testing shall be provided at the municipality's request.

All castings of valves to be considered must be manufactured, assembled and tested in the contiguous United States of Americas, and letters of certification must accompany any and all products at the request of municipality.

Valves shall be FlowMaster.



20" and 24" FlowMaster® Resilient Wedge Gate Valves Sample Specification

Valves shall be manufactured and tested to meet the requirements of ANSI/AWWA C515. Valves shall meet or exceed the requirements of Underwriters Laboratories Standard UL262 and Factory Mutual Standard 1120/1130 (for open left models).

The rated working pressure of the valve shall be 250 psi.

All valve component castings shall originate in the USA.

The body, bonnet, wedge and seal plate shall be made of ductile iron in accordance with ASTM A536. The wedge shall be totally encapsulated in rubber. This rubber coating shall be permanently bonded to the ductile iron wedge casting and shall meet ASTM D429 tests for rubber to metal bonding. No paint shall be allowed in the wedge and the wedge must not be hollow. Containment of the stem nut must only be on two sides to facilitate easy removal.

There shall be three stem seal O-rings; two in the seal plate which shall be replaceable

with the valve in the full open position at rated working pressure, and one under the stem thrust collar. All gaskets shall be O-ring seals. O-rings set in a cartridge shall not be allowed. A grit seal must be present above the seal plate to prevent dirt intrusion.

Valves are to be open [left or right]. Operating nuts are to be painted [black for open left or red for open right]. The NRS valves shall be provided with a 2" square operating nut (2" - 24").

20" - 24" valves must use bronze thrust collars. Stainless steel thrust washers or collars are not acceptable.

All valves 20" or larger must incorporate a high-strength 304 stainless steel stem that is lead free.

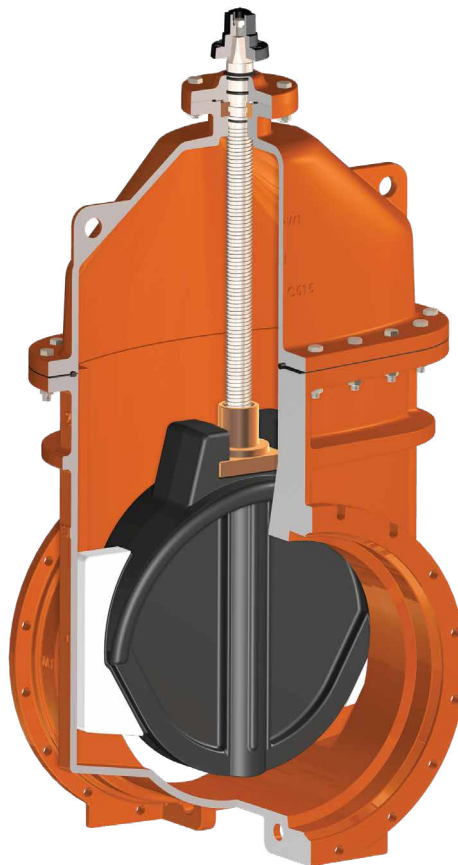
All fasteners are to be 304 stainless steel. Socket head bolts shall not be allowed. If only two bolts are used to secure the seal plate, the bolts must be fastened to the bonnet with a drilled and tapped hole in the bonnet.

The body, bonnet and seal plate shall be epoxy coated in accordance with ANSI/AWWA C550 certified to NSF 61. This coating shall be on the interior and the exterior of the valve. The manufacturers name, valve size, year of manufacture, pressure rating ("250W"), C515 and "DI" shall be cast on the valve.

Each valve shall be tested in accordance with ANSI/AWWA C515, UL262 and FM 1120/1130. This shall include hydrostatic pressure testing at 2 times rated working pressure. A certification of manufacture and testing shall be provided at the municipality's request.

All castings of valves to be considered must be manufactured, assembled and tested in the contiguous United State of Americas, and letters of certification must accompany any and all products at the request of municipality.

Valves shall be FlowMaster.



Valve Boxes



Durable valve box products that give you one less thing to worry about.

EJ offers a variety of valve boxes to access underground valves.

EJ valve boxes are made from class 35B gray iron with superior wall thickness for added durability.

From slip type to screw type, you can expect to get the products you need for years of service.

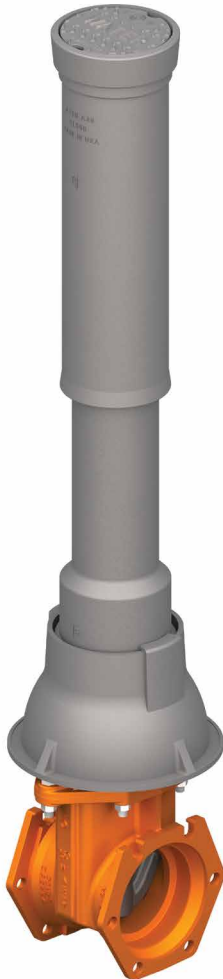


Quality You Can See

- ASTM A48, class 35B gray iron is used for added tensile durability
- 1/4" minimum wall thickness helps reduce breakage
- Standard 1/2" top edge holds up to traffic and snow plows

Made in the USA

Meets American Iron and Steel (AIS) requirements—please contact your Sales Representative for Buy America requirements prior to ordering.



Asphaltic Coating and Undipped

All products are made available with asphaltic coating "dipped" or undipped. EJ recommends specifying cast iron products in their natural state to minimize any unnecessary environmental impact.



SELFLEVEL® Valve Box Top

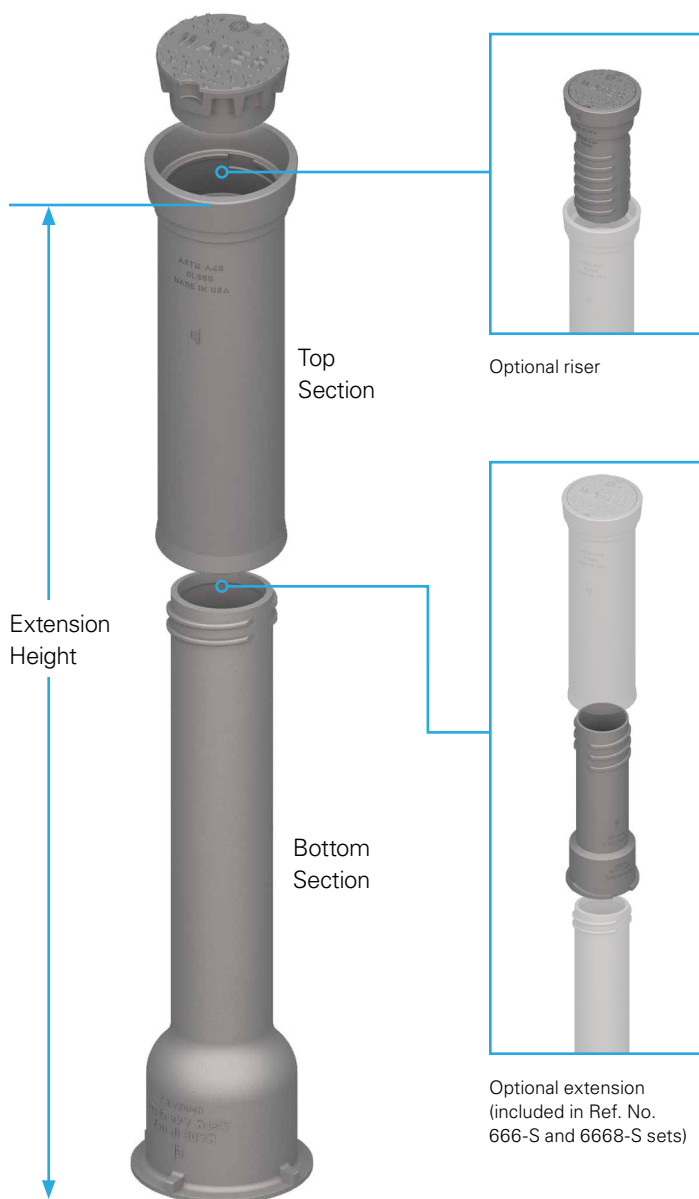
Easily blend valve access into roadways and keep your roads smooth for years to come with our self-leveling valve box top.



Learn more about this product at
ejco.com/valve-box

SCREW TYPE—2 PIECE 8550 SERIES

- Accommodates 2" through 12" valves
- 5" clear opening
- ASTM A48, Class 35B
- 85% minimum recycled content
- Asphaltic coating or undipped
- Made in USA



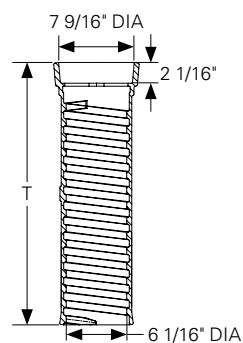
Standard 2 Piece Sets

8550 Series, 2 Piece Screw Type Sets

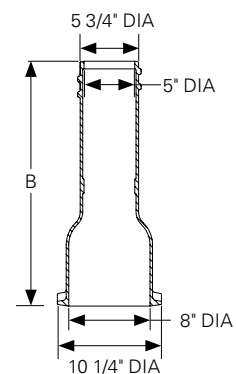
| Extension Height | Top Section Dim. T | Bottom Section Dim. B | Dim./Extension Type | Ref. No. | Product No. |
|------------------|--------------------|-----------------------|---------------------|----------|-------------|
| 19 - 22 | 10 | 15 | — | 461-S | 85501922 |
| 27 - 32 | 10 | 24 | — | 462-S | 85502732 |
| 27 - 37 | 16 | 24 | — | 562-S | 85502737 |
| 33 - 43 | 16 | 30 | — | 563-S | 85503343 |
| 39 - 50 | 16 | 36 | — | 564-S | 85503950 |
| 36 - 52 | 26 | 30 | — | 662-S | 85503652 |
| 39 - 60 | 26 | 36 | — | 664-S | 85503860 |
| 51 - 71 | 26 | 24 | 30/#60 | 666-S | 85505171 |
| 62 - 82 | 26 | 36 | 30/#60 | 668-S | 85506282 |

Note: sets numbers use standard 6800 series non-locking "Water" lettered lid (06800001).

Top



Bottom



8550 Tops

| Dim. T | Ref. No. | Product No. |
|--------|----------|-------------|
| 10 | 10T | 85507010 |
| 16 | 16T | 85507016 |
| 26 | 26T | 85507026 |

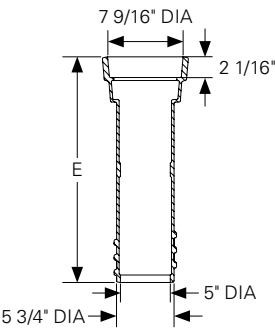
8550 Bottoms

| Dim. B | Ref. No. | Product No. |
|--------|----------|-------------|
| 15 | 15B | 85506015 |
| 24 | 24B | 85506024 |
| 30 | 30B | 85506030 |
| 36 | 36B | 85506036 |

Note: All table dimensions are in inches.
Product numbers shown are for asphaltic coated.
For complete dimensions, see respective product drawings.

Riser

From the top side, add extra height to the top section without having to dig up the valve box.



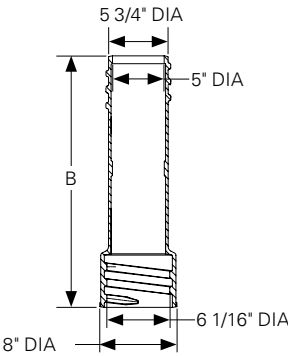
8550 Risers

| Dim. E | Height Increase | Ref. No. | Product No. |
|-----------|--------------------|-------------|----------------|
| 16 1/2 | 2 1/2 - 9 | #69 | 85508009 |
| 22 1/2 | 2 1/2 - 15 | #18A | 85508018 |
| 28 1/2 | 2 1/2 - 21 | #24A | 85508024 |

Note: for 1" to 6" grade adjustments, see page 35 for 8500 series valve box risers.

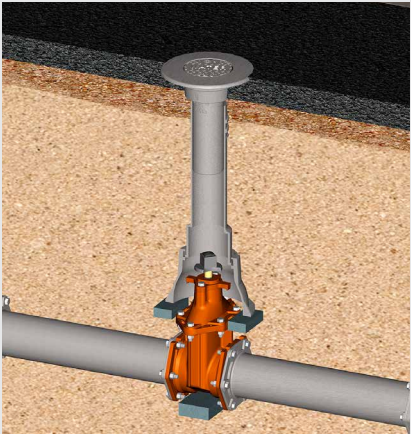
Extension

Insert between the top and bottom sections for extra height during installation.



8550 Extensions

| Dim. E | Height Increase | Ref. No. | Product No. |
|-----------|--------------------|-------------|----------------|
| 18 | 14 | #58 | 85606018 |
| 24 | 18 | #59 | 85606024 |
| 30 | 24 | #60 | 85606030 |



SELFLEVEL® valve box top

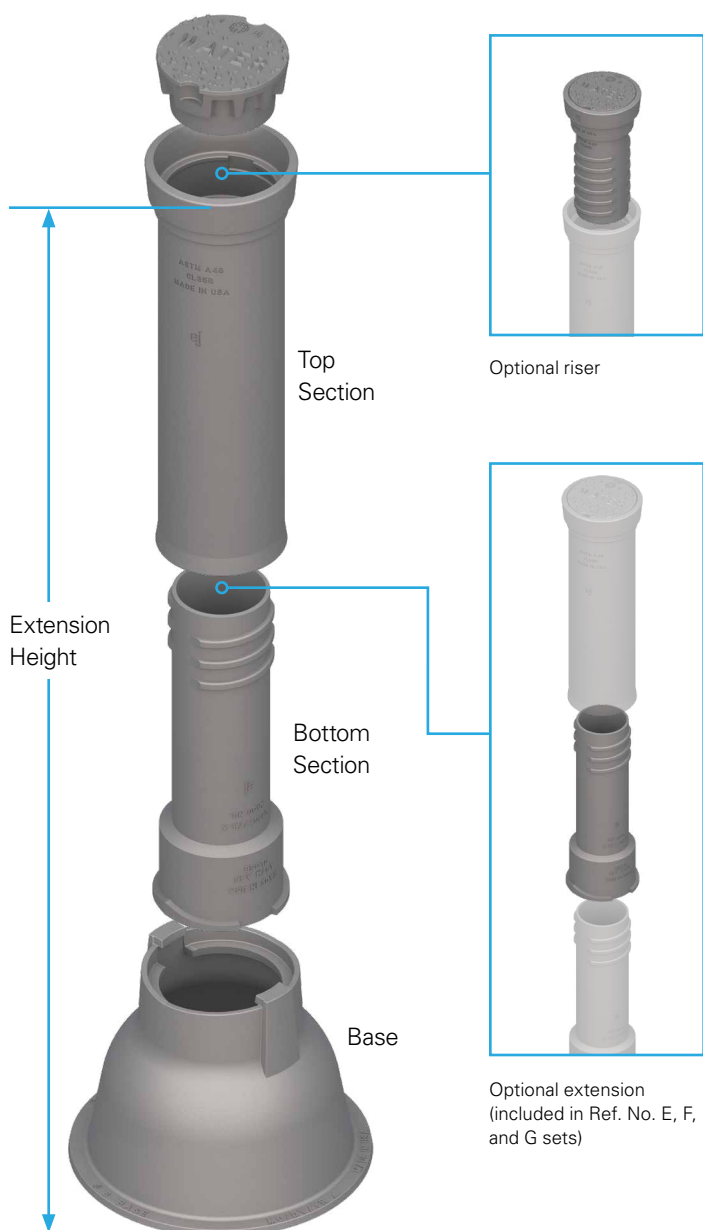
Add extra height and float with the road. Available for 8550, 8555, and 8560 valve box sets.

See page 36 for more information.

SCREW TYPE—3 PIECE

8560 SERIES

- Accommodates 2" through 24" valves
- 5" clear opening
- ASTM A48, Class 35B
- Uses 8550 series top section
- 85% minimum recycled content
- Asphaltic coating or undipped
- Made in USA



Standard 3 Piece Sets

8560 Series, 3 Piece Screw Type Sets

| Extension Height | Top Section Dim. T | Bottom Section Dim. B | Dim./Extension Type | Ref. No. | Product No. |
|---------------------|--------------------|-----------------------|---------------------|----------|-------------|
| #4 Base Sets | | | | | |
| 29 - 38 | 16 | 18 | — | A | 85603342 |
| 35 - 45 | 16 | 24 | — | B | 85603949 |
| 41 - 50 | 16 | 30 | — | C | 85604554 |
| 47 - 56 | 16 | 36 | — | CC | 85605060 |
| 41 - 62 | 26 | 30 | — | D | 85604566 |
| 47 - 68 | 26 | 36 | — | DD | 85605172 |
| 59 - 68 | 16 | 24 | 30/#60 | E | 85606372 |
| 59 - 80 | 26 | 24 | 30/#60 | F | 85606384 |
| 70 - 90 | 26 | 36 | 30/#60 | G | 85607493 |

#6 Base Sets

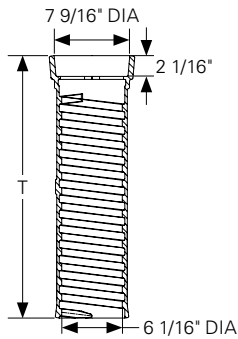
| | | | | | |
|---------|----|----|--------|----|----------|
| 33 - 42 | 16 | 18 | — | A | 85603343 |
| 39 - 49 | 16 | 24 | — | B | 85603950 |
| 45 - 54 | 16 | 30 | — | C | 85604555 |
| 51 - 60 | 16 | 36 | — | CC | 85605061 |
| 45 - 66 | 26 | 30 | — | D | 85604567 |
| 51 - 72 | 26 | 36 | — | DD | 85605173 |
| 63 - 72 | 16 | 24 | 30/#60 | E | 85606373 |
| 63 - 84 | 26 | 24 | 30/#60 | F | 85606385 |
| 74 - 94 | 26 | 36 | 30/#60 | G | 85607494 |

#160 Base Sets

| | | | | | |
|---------|----|----|---|---|----------|
| 43 - 52 | 16 | 30 | — | C | 85604556 |
| 43 - 64 | 26 | 30 | — | D | 85604568 |

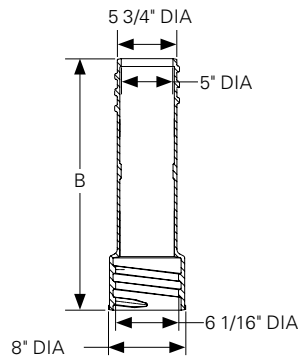
Note: set numbers use standard 6800 series non-locking "Water" lettered lid (06800001).

Note: All table dimensions are in inches.
Product numbers shown are for asphaltic coated.
For complete dimensions, see respective product drawings.

Top

8560 Tops

| Dim. T | Ref. No. | Product No. |
|-----------|-------------|----------------|
| 10 | 10T | 85507010 |
| 16 | 16T | 85507016 |
| 26 | 26T | 85507026 |

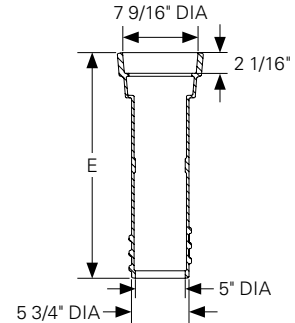
Bottom/Extension

8560 Bottoms

| Dim. B | Ref. No. | Product No. |
|-----------|----------|----------------|
| 18 | 18B/#58 | 85606018 |
| 24 | 24B/#59 | 85606024 |
| 30 | 30B/#60 | 85606030 |
| 36 | 36B | 85606036 |

Riser

From the top side, add extra height to the top section without having to dig up the valve box.



8550 Risers

| Dim. E | Height Increase | Ref. No. | Product No. |
|-----------|--------------------|-------------|----------------|
| 16 1/2 | 2 1/2 - 9 | #69 | 85508009 |
| 22 1/2 | 2 1/2 - 15 | #18A | 85508018 |
| 28 1/2 | 2 1/2 - 21 | #24A | 85508024 |

Note: for 1" to 6" grade adjustments, see page 35 for 8500 series valve box risers.

#4 Base

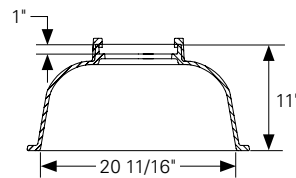
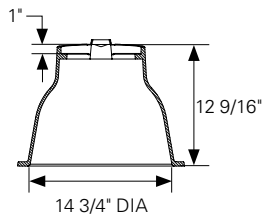
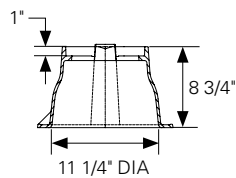
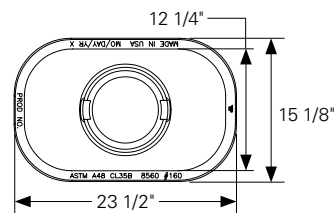
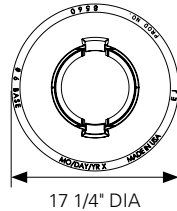
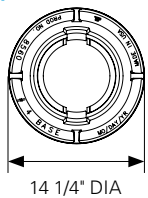
Accommodates up to 6" valves

#6 Base

Accommodates 8–10" valves

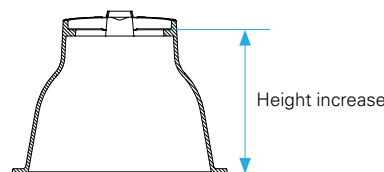
#160 Base

Accommodates 12" and above valves

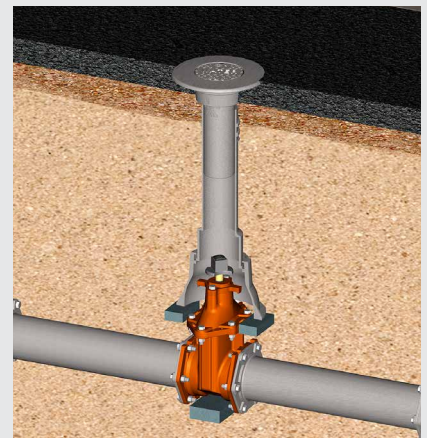
Section Views**Top Views**

8560 Bases

| Height Increase | Ref. No. | Product No. |
|--------------------|-------------|----------------|
| 7 3/4 | #4 | 85605004 |
| 11 9/16 | #6 | 85605006 |
| 10 | #160 | 85605160 |



Illustrating the height increase when assembled.

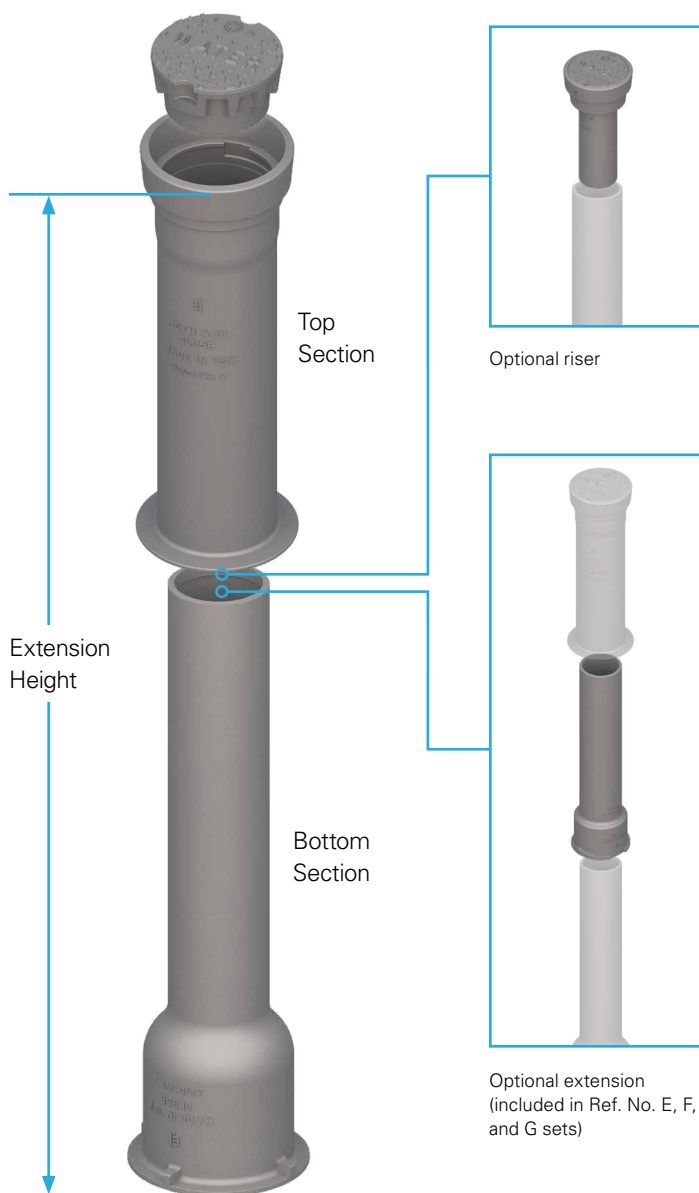
**SELFLEVEL® valve box top**

Add extra height and float with the road. Available for 8550, 8555, and 8560 valve box sets.

See page 36 for more information.

SLIP TYPE—2 PIECE 8555 SERIES

- Accommodates 2" through 12" valves
- 5" clear opening (reduced to 4" with riser)
- ASTM A48, Class 35B
- 85% minimum recycled content
- Asphaltic coating or undipped
- Made in USA



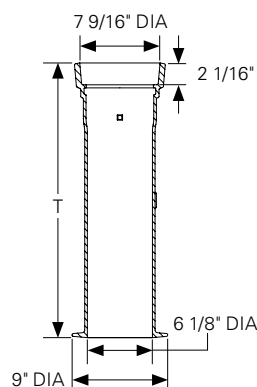
Standard 2 Piece Sets

8555 Series, 2 Piece Slip Type Sets

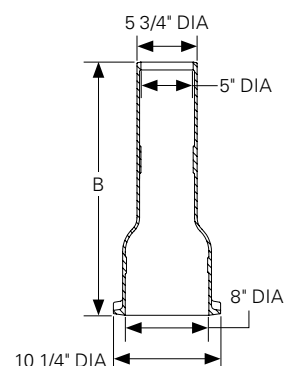
| Extension Height | Top Section Dim. T | Bottom Section Dim. B | Dim./Extension Type | Ref. No. | Product No. |
|------------------|--------------------|-----------------------|---------------------|----------|-------------|
| 19 - 22 | 10 | 15 | — | 461-A | 85551922 |
| 27 - 32 | 10 | 24 | — | 462-A | 85552732 |
| 27 - 37 | 16 | 24 | — | 562-A | 85552737 |
| 33 - 43 | 16 | 30 | — | 563-A | 85553343 |
| 39 - 50 | 16 | 36 | — | 564-A | 85553950 |
| 36 - 52 | 26 | 30 | — | 662-A | 85553652 |
| 39 - 60 | 26 | 36 | — | 664-A | 85553960 |
| 51 - 71 | 26 | 24 | 30/#60-A | 666-A | 85555171 |
| 62 - 82 | 26 | 36 | 30/#60-A | 668-A | 85556282 |

Note: assembly numbers use standard 6800 series non-locking "Water" lettered lid (06800001).

Top



Bottom



8555 Tops

| Dim. T | Ref. No. | Product No. |
|--------|----------|-------------|
| 10 | 10T | 85557010 |
| 16 | 16T | 85557016 |
| 26 | 26T | 85557026 |

8555 Bottoms

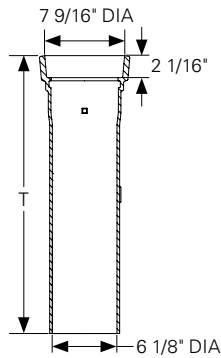
| Dim. B | Ref. No. | Product No. |
|--------|----------|-------------|
| 15 | 15B | 85556015 |
| 24 | 24B | 85556024 |
| 30 | 30B | 85556030 |
| 36 | 36B | 85556036 |
| 54* | 54B | 00863510 |

*Product dimensions vary from illustration. See product drawing for complete dimensions.

Note: All table dimensions are in inches.
Product numbers shown are for asphaltic coated.
For complete dimensions, see respective product drawings.

Other Top Options

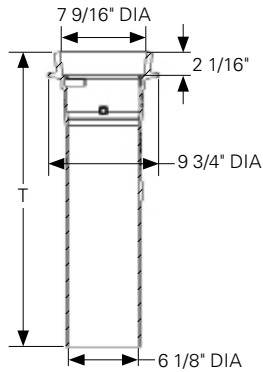
Top Without Bottom Flange



8555 Top Without Bottom Flange

| Dim. | Ref. | Product |
|------|------|----------|
| T | No. | No. |
| 16 | 16T | 85557117 |
| 26 | 26T | 85557126 |

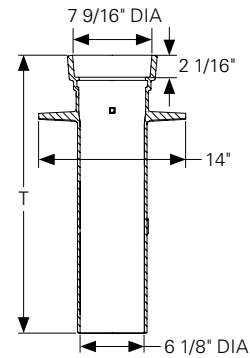
Top with Shifting Flange



8555 Top With Shifting Flange

| Dim. | Ref. | Product |
|------|------|----------|
| T | No. | No. |
| 26 | 26T | 85557228 |

Top with Mid-Flange

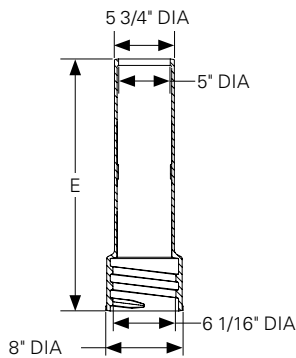


8555 Top With Mid-Flange

| Dim. | Ref. | Product |
|------|------|----------|
| T | No. | No. |
| 26 | 26T | 85557226 |

Extension

Insert between the top and bottom sections for extra height during installation.

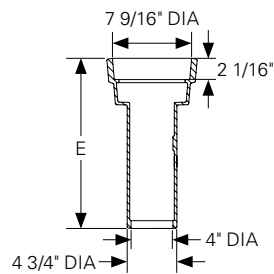


8555 Extensions

| Dim. | Height | Ref. | Product |
|------|----------|-------|----------|
| E | Increase | No. | No. |
| 18 | 14 | #58-A | 85556518 |
| 24 | 18 | #59-A | 85556524 |
| 30 | 24 | #60-A | 85556530 |

Riser

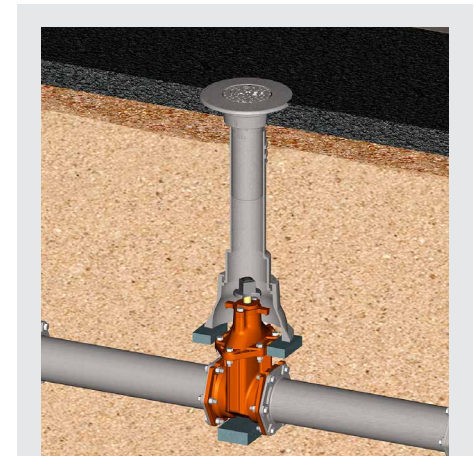
From the top side, add extra height to the top section without having to dig up the valve box.



8555 Risers

| Dim. | Height | Ref. | Product |
|--------|------------|------|----------|
| E | Increase | No. | No. |
| 16 1/2 | 2 1/2 - 12 | #69 | 85558009 |

Note: for 1" to 6" grade adjustments, see page 35 for 8500 series valve box risers. Use of risers decreases available clear opening.

**SELFLEVEL® valve box top**

Add extra height and float with the road. Available for 8550, 8555, and 8560 valve box sets.

See page 36 for more information.

VALVE BOX DROP LIDS
6800 SERIES

Standard Features

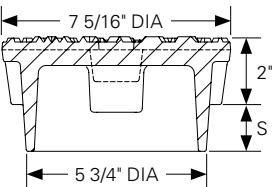
- Fits all 8550, 8555 and 8560 series valve boxes
- ASTM A48, Class 35B
- 85% minimum recycled content
- Made in USA

Options

- Special lettered covers
- Logo covers
- Locking lid
- Extra deep covers for high traffic areas
- Asphaltic coating or undipped

Non-Locking Lid

Traditional style drop lids with 1 1/2", 2", or 2 1/2" skirt heights



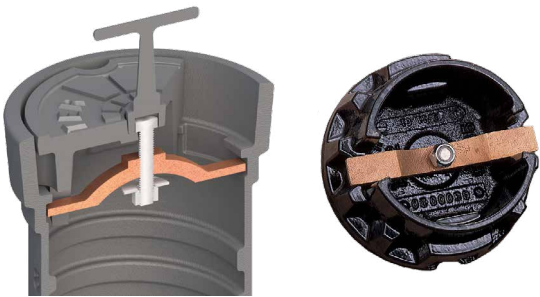
6800 Valve Box Drop Lids

| Skirt Dim. S | Water Lettering Product No. | Sewer Lettering Product No. | Gas Lettering Product No. |
|-----------------|--------------------------------|--------------------------------|------------------------------|
| 1 1/2 | 06800001 | 06800022 | 06800051 |
| 2 | 06800007 | 06800006 | — |
| 2 1/2 | 06800019 | — | — |

Locking Lid

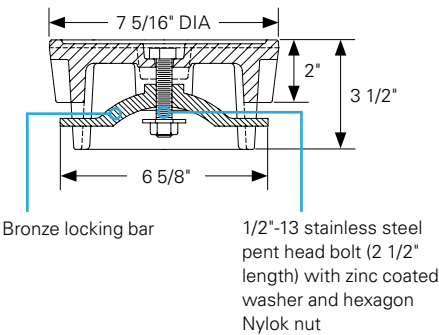
The greatest security to keep lids in their place.

The top section of the valve box includes a lock bar pocket to secure the lid. The pocket is standard on the top section of all 8550 and 8555 valve boxes.



6800 Locking Lids

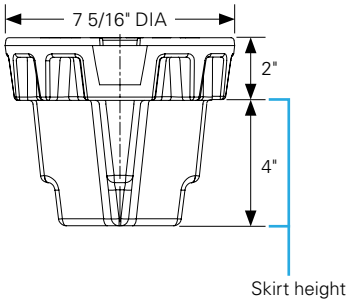
| Lettering | Product No. |
|-----------|-------------|
| Water | 06800025 |
| Sewer | 06800023 |
| Gas | 06800021 |



Note: All dimensions are in inches. Asphaltic coated product numbers provided. Contact your EJ Sales Representative for additional lettering options.

Extra Deep Lids

For areas of high traffic, extra deep 4" skirt drop lids are a safer solution. The extra depth prevents it from flipping out as it makes contact with the side walls of the valve box.



6800 Extra Deep Lids

| Lettering | Product No. |
|-----------|-------------|
| Water | 06800045 |
| Sewer | 06800073 |
| Gas | 06800074 |

Note: Asphaltic coated product numbers provided. Contact your EJ Sales Representative for additional lettering options.

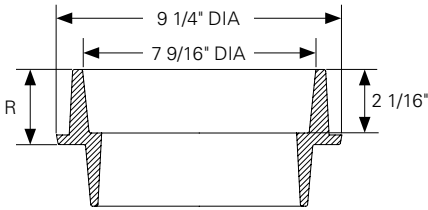
VALVE BOX RISERS
8500 SERIES

Standard Features

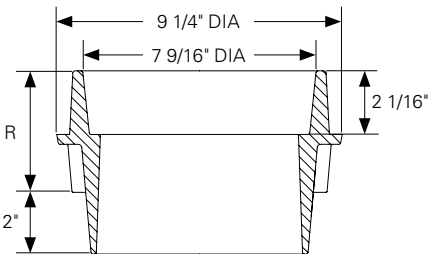
- Fits all 8550, 8555 and 8560 series valve boxes
- Raises valve box lid to new grade
- ASTM A48, Class 35B
- Uses standard drop lid
- 85% minimum recycled content
- Made in USA

Options

- Set screws
- Asphaltic coating or undipped



For risers 1" to 2 1/2"



For risers 3" to 6"

8500 Valve Box Risers

| Rise Dim. R | Product No. |
|-------------|-------------|
| 1 | 85008010 |
| 1 1/2 | 85008015 |
| 2 | 85008020 |
| 2 1/2 | 85008025 |
| 3 | 85008030 |
| 4 | 85008040 |
| 6 | 85008060 |

Note: All dimensions are in inches. Undipped product numbers provided.

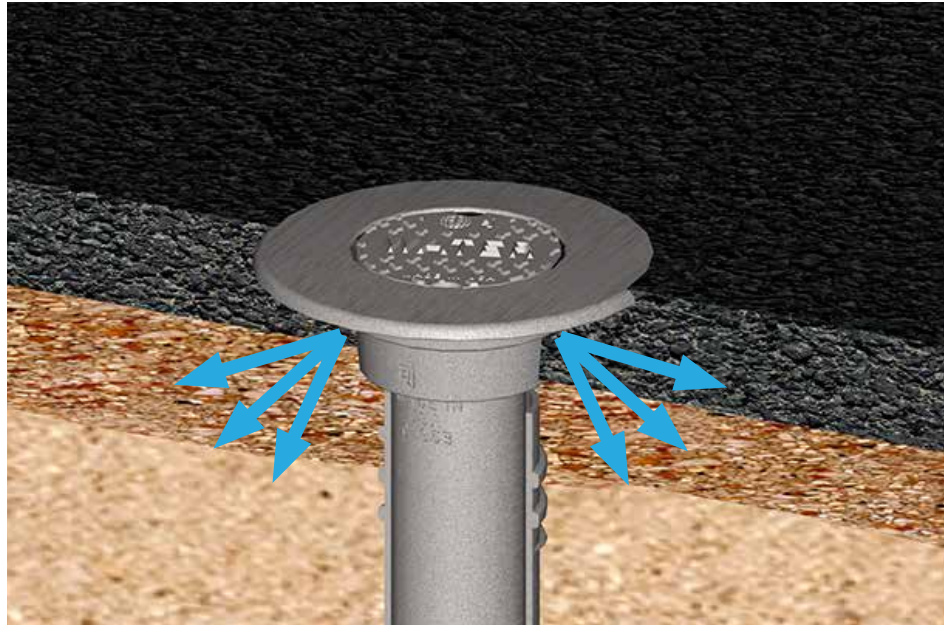
SELFLEVEL® VALVE BOX TOP

Increase driveability and extend road life with SELFLEVEL® valve tops. Designed to prolong asphalt life by reducing cracking, and reduce snow plow damage, the SELFLEVEL valve box top is supported by and moves with the surrounding road surface. This allows it to remain flush with the road surface.

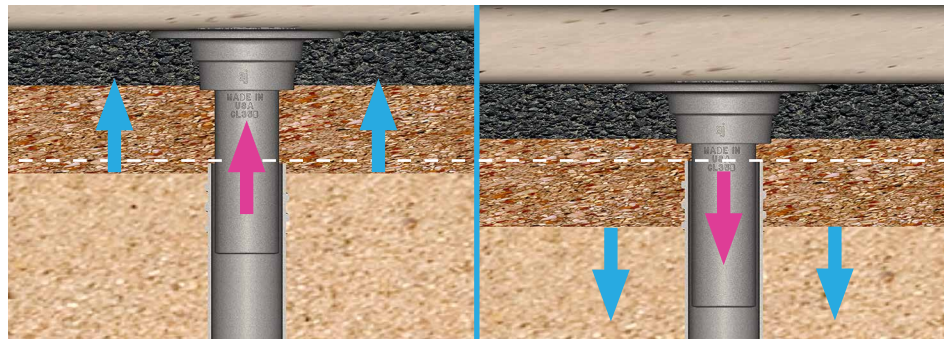
Lasting longer than traditional valve box tops and risers in situations where there can be frost heave and natural road settling, this “floating” affect also helps prevent road damage and protects by dispersing traffic vibrations and shock throughout the road surface.

Standard Features

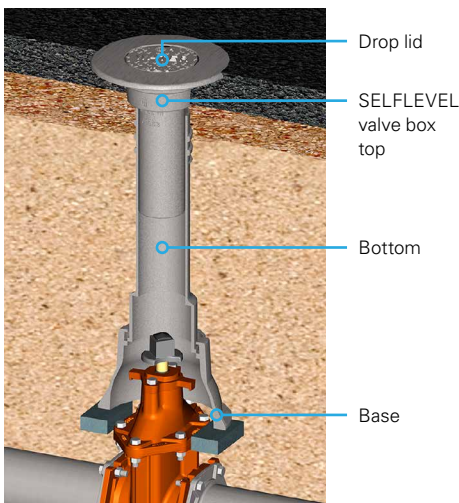
- Heavy duty
- Accommodates 2" through 12" valves
- 4" clear opening
- Frame fits with locking and non-locking 6800 series lids
- ASTM A48, Class 35B
- 85% minimum recycled content
- Made in USA



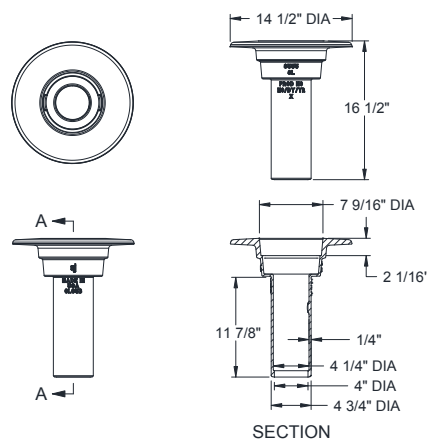
Once installed, the unit will continue to move with the road surface. The road surface aids in absorption of traffic vibration and shock.



The valve box top stays level with the road surface, even when the road heaves due to extreme temperature changes or settling of the pavement. Pavement around the valve box stays smooth for years to come.



The SELFLEVEL valve box top is used with drop lid, bottom, and base to provide the complete solution for valve box access.



85558008 SELFLEVEL valve box top dimensions

Note: It is recommended to use the SELFLEVEL valve box top with valve box bottoms and extensions to reduce infiltration and debris.



Learn more about
this product at
[ejco.com/selflevel-
valve-box](http://ejco.com/selflevel-valve-box)

GAS VALVE BOXES
8570 SERIES

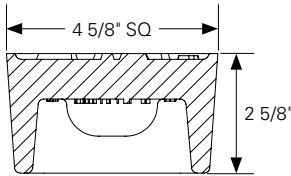
The 8570 series is designed for gas utilities and features a square top and lid. Thick walled top sections hold up against plows and road traffic.

- 4 13/16" clear opening
- ASTM A48, Class 35B
- 85% minimum recycled content
- Made in USA

Lid



Top view



Side view

8570 Lids

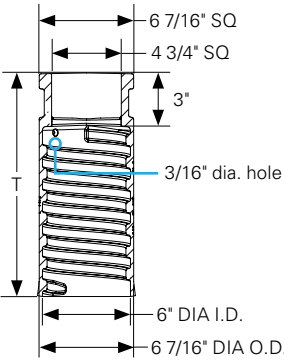
| Lettering | Product No. |
|-----------|-------------|
| Gas VV | 85700023 |
| HP Gas | 85700021 |

Note: extra deep lids and risers available



Illustrating 85700000 screw type valve box set

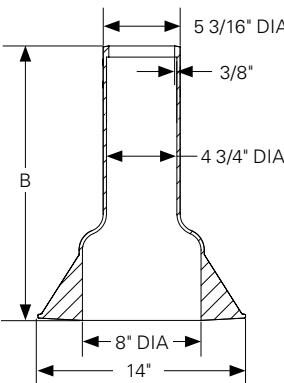
Top



8570 Tops

| Dim. T | Product No. |
|--------|-------------|
| 11 | 85707011 |
| 15 | 85707015 |

Bottom



8570 Bottoms

| Dim. B | Product No. |
|--------|-------------|
| 14 1/2 | 85706015 |
| 18 1/2 | 85706019 |

Note: All table dimensions are in inches.
Product numbers shown are for undipped.
For complete dimensions, see respective product drawings.

ADDITIONAL VALVE BOXES

There are additional valve box products available from EJ. To see our full selection, visit the products section of ejco.com.

When you register and log into ejco.com, more features are available:

- View product details
- Download product drawings
- Create personal lists to organize your products—called My Projects
- Request quotes—for a project list
- Download one PDF with every drawing in your project



Learn more at
ejco.com/valve-box

Valve boxes, covers and risers products page

Product details

Product drawing





ejco.com
800 626 4653



Americas

800 626 4653
231 536 2261

EMEA

Europe, Middle East
and Africa

+33 (0)344 08 28 00

Asia-Pacific

+61 (0)7 3216 5000

EJ

301 Spring Street
PO Box 439
East Jordan, MI 49727
800 626 4653
231 536 2261
us.sales@ejco.com

Registered Mark(s)



FlowMaster®
SELFLEVEL®
WaterMaster®